

953





FOR YOUR
SECURITY AND COMFORT
XAN GROUP

ABOUT US

Khan Group of Companies has been operating since 2013. This group has provided services in various fields during its activity, including the construction of security and telecommunication systems for state-owned industrial cities, business centers, residential complexes, banks, fitness halls and commercial organizations.

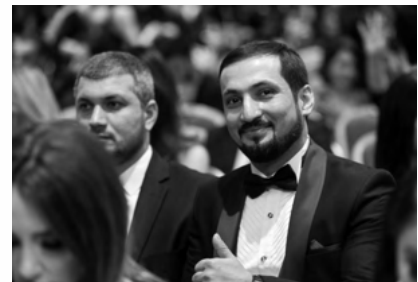
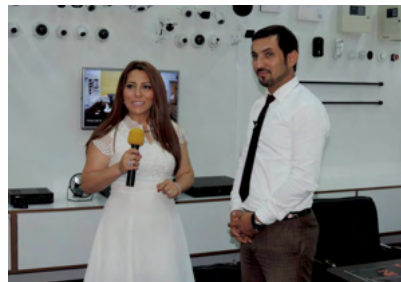
The **Khan Group** of companies includes **Flame Technologies LLC** and **Khan Construction LLC**.

Flame Technologies LLC mainly operates in the following areas:

- Queue System, Auto Parking System, Boom gate, Road Blocker, Video Surveillance, Turnstile
- Access Control, Fire System, Alarm System, Network System, Smart Home and Smart Building System, Sound System, Store System, GSM Amplifier Systems.

Khan Construction LLC operates mainly in the following areas:

- Ventilation Systems, Elevator Systems, Electrical Systems, Mechanical Systems and Construction Services.



Our Vision and Mission

Today, different companies, organizations, enterprises, etc. are functioning with different names all over the world. Each company is known for its activities. And for that purpose, each company separately has their own progress plan and policies. Especially we can say that companies pursue their marketing policy by name.

Our company has been operating under the name of Khan Group. We consider our marketing plan is very important that differs due to its fluent structure, logicity and evidence of impressive results. Following this plan, our goal is to achieve fast and long-term effect.

Upon analyzing the performance of **Khan Group**, we are heading from general towards particular. First of all we introduce our customers with all our works and then we offer high-tech equipment which will satisfy their demand. In any case, we try to justify our name.

Upon analyzing the performance of our company called **Flame Technologies**, we tend to focus on the problem. First of all, we present our work as a whole, and then we offer our customers high-tech equipment that suits them. In any situation, we try to justify our name.

OUR SERVICES



QUEUE SYSTEM



AUTO PARKING SYSTEM



ROAD BLOCKER



METAL DETECTOR



VIDEO SURVEILLANCE



TURNSTILE



ACCESS CONTROL



FIRE SYSTEM



ALARM SYSTEM



SMART HOME AND BUILDING



AUDIO SYSTEM



DATA SYSTEM



STORE SYSTEM



GSM AMPLIFIER

OUR SERVICES



CONSTRUCTOIN



BMM



VENTILATION SYSTEMS



ELEVATOR SYSTEM



ELECTRICAL SYSTEMS



MECHANIC SYSTEMS



QUEUE SYSTEM



Q-smart D2V



Specially designed and developed Linux Operating system by -smart.
Optional Windows operating system supports.
Remote system management over the web browsers (compatible with iPhone, Ipad, Tablet or Computer)
Performance reporting over the web browsers (compatible with iPhone, Ipad, Tablet or Computer)
19 inches LED Monitor, Infra Red vandal proof touch screen with the 4096x4096px resolution
Maintenance-free, industrial type thermal printer with autocutter (50.000km printing, 1million cut warranty).
Supports localization with all types of alphabets with multi-language design
Over 15.000 operation capacity on a daily basis

Q-smat DSI



Convert your Monitors or TVs into queue management system routing displays with Q-smart DSI. The screens with Q-smart DSI connecting to your queue management system with Ethernet or Wireless network infrastructure. It turn into the corporate TV which broadcast advertisement, make TV broadcasting, display your announcements and show your videos or photographs instead of the static LED screens. You can display the live RSS services and you can ensure that your customers follow up your screens with the live weather forecasts or several different type of live services.
Semi-Transparent full screen warning attracting the attention in the ticket call.
MPEG, MPEG4, AVI, 3GP video codec, BMP, GIF, JPEG, JPG, PNG image formats support.
WiFi or Gigabit Ethernet Network connection.
Interactive interaction with your customers with the several options such as QR code, scrolling text, flash news, RSS.

Q-smart e



Exterior design can be customizable with several color options and front panel application
Online appointment distribution, management and in-branch controls from the Internet.
Performance reporting over the web browsers (compatible with iPhone, Ipad, Tablet or Computer)
Remote system management over the web browsers (compatible with iPhone, Ipad, Tablet or Computer)
22 inches LED Monitor, Infra Red vadal proof touch screen with the 4096x4096px resolution

Q-smart D2H



The queue management system ticket dispenser designed with powerfull Intel quad core CPU in its hearth and robust, stable and secure Linux operating system in its mind. Q-smart D series ticket dispenser meets the needs of your organization queue management needs with a daily 10,000 operation capacity.
Specially designed and developed Linux Operating system by Q-smart.
Optional Windows operating system supports.
Remote system management over the web browsers (compatible with iPhone, Ipad, Tablet or Computer)
Performance reporting over the web browsers (compatible with iPhone, Ipad, Tablet or Computer)



Q-smart FLEX



Route your customers who will be called with service to the personnel or the room which makes the call in your queue management systems with the main routing displays of Matrix series. Thanks to special led technology, you can use main routing displays without any loss in the lumination of the LEDs for longer than 10 years. You can add additional rows as much as you need as well as the 2, 3, 4 and 5 row option offered as standard.

Unlimited additional previous row support.

42x10 pixel resolution.

Scrolling text information messages.

75mm character height.

Operate without any light loss for many years with Ultra-Red Matrix LED technology.

Windows True Type Fonts support.

Q-smat Terminal



Q-smart B2+ is all in one Queue Management System solutions for small and medium size business. Which doesn't need to any additional computer and meets all your queue management system needs with its technological architecture. Q-smart B2+ connects to your wireless network with the integrated WiFi and which can working together WiFi products as wireless on your 802.11g WiFi network. All equipments that will be needed for the queue management systems (such as WiFi, thermal printer, main power distributor, interface, converters...) are integrated inside it. The system manages your Queue System without the need for any other additional computer, equipment or device.

Specially designed and developed Linux Operating system by Q-smart.

Wireless network communication with 802.11g.

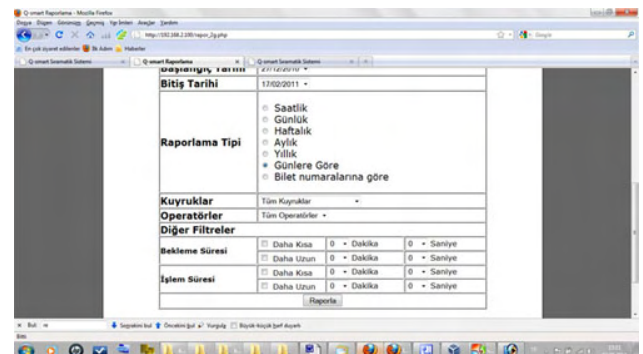
Cross platform supported, web based system management.

System and user performance reports over cross platform web based performance reporting.

Detailed central performance reports

The data of your branches collected in the head office helps an advanced report generation. You can examine the performances amongst your branches by the help of the report outputs, evaluate the works of branches, queues or staff, by comparing to the whole system.

You can receive concrete answers to the questions related to your work load, specific to 'which day of the week', 'what time' and 'which month', by the help of the performance reports to be generated according to the working hours, the days of the week, the weeks of the year, the months and the years





AUTO PARKING SYSTEM

The parking solution systems that we offer, allow the automation of car parks. It is possible to control the entrance, exit and the captured parking places in the automated mode. You can use the car-parks, by paying in cash or via ID card.

The direct payment to the booking-office or tablet machines is also available. It is also possible to fix a special equipment to control the free and captured places. The software has many functions, is practical and allows making any operations.

Administration can get a complete report about the full-work of car-park for upon request. Firstly, it is just a security of cars. You can prevent the theft and unpleasant accidents of car by special security cameras. Therefore, customer will get the information about the number of free places, via special sensors and traffic-lights without entering the car-parking.

It is also an income! Thanks to Park cash, you can see exactly the sum of money, which you pay. Automation of any equipment reduces the labor force and you save the budget.

Pay and display machines include the equipment presenting chance to manage parking stations and read the plates.

Parking Box



Lcd Display
 Ticket Issuance Rate <2sec
 Ethernet Connection
 Ease Of Tariff Editing
 Ability To Use Different Sizes Of Tickets
 Ability To Write Detailed Tickets (Barcode, Business Name, Date And Time Etc.)
 Define Subscriber
 Direct Entry-exit With Subscriber Card
 Receipt Writing
 Activation Only With Vehicle in Front
 Maximum 1 Ticket Per Vehicle
 License Plate Writing (Optional)
 Intercom (Optional)



Large Lcd Display
 Ticket Issuance Rate <2sec
 Ethernet Connection
 Ease Of Tariff Editing
 Ability To Use Different Sizes Of Tickets
 Ability To Write Detailed Tickets (Barcode, Business Name, Date And Time Etc.)
 Define Subscriber
 Direct Entry-exit With Subscriber Card
 Receipt Writing
 Detailed Reporting
 Record-keeping (Entry-Exit Time)
 Activation Only With Vehicle in Front
 Maximum 1 Ticket Per Vehicle
 License Plate Writing (Optional)
 Intercom (Optional)
 Cash Register Pos Integration (Optional)



User-Friendly Interface
 Touch Screen
 Reading Barcoded Tickets
 Process With Plate
 RFID Card Reader
 Ability To Pay With Paper Money
 Ability To Pay With Coins
 Able To Give Money
 Receipt Printing
 Credit Card Integration (Optional)
 Cash Register Integration (Optional)



Quick Opening (<4sec)
 Safety Photocell
 Warning Light
 Under Arm LED Indicator
 Digital Switch Setting
 Control Via PC Software (USB, Ethernet Connection)
 Adjustable With Tablet (OTG Cable Connection)

ROAD BLOCKER

Cork Barrier 4-12



K-12 Cork Barriers

It is a security product specially designed against the risk of assassination of all types of vehicles.

It is produced especially for high security areas and its operating system, impact resistance and usage methods are completely different from other standard products. System License Plate Recognition (OGS), Card Readers, etc. integrations can also be connected.

However, besides being a control manufacturer, the risk analysis of the area together with the security unit and engineers provides special solutions to its customers.

Stable Cork Barrier



Weather and impact resistant fixed Cork Barriers are used especially in public and private areas and can be produced in different diameters and heights according to the requirements of the area.

Production and assembly methods,

The fixing to the ground concrete is designed as locking or detachable if necessary.

Rigid Cork barriers add value to your architectural works as well as your safety.

Manuel Cork Barrier



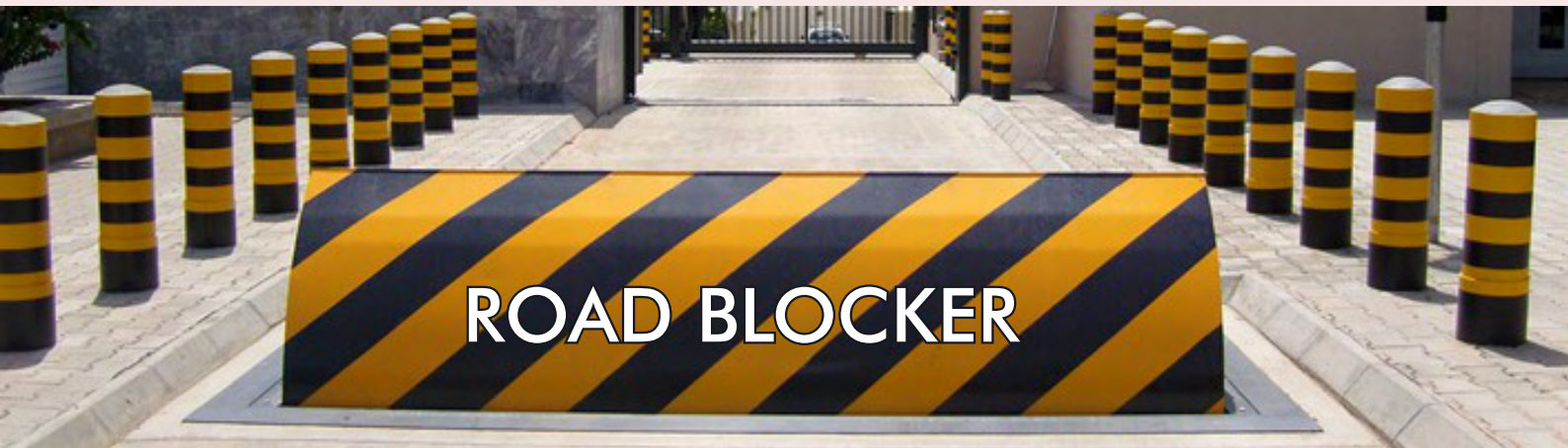
Our newly produced Manual Corks are easy to use and designed for your private parking spaces. It can be considered as an alternative material in front of your shops, shopping malls and pavements with its easy installation and convenient usage.

Hydraulic Cork Barrier



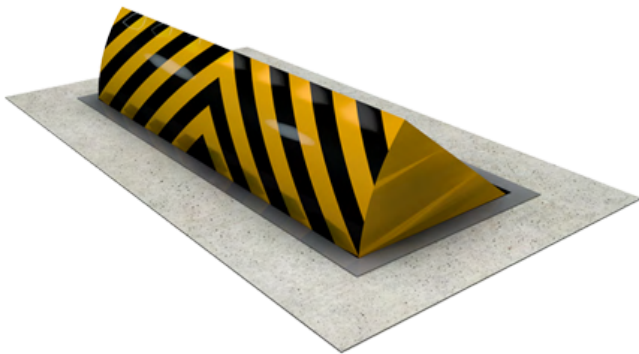
Shock and weather resistant Hydraulic Cork Barriers are manufactured from 304 quality stainless steel pipes with advanced technology. The diameter and height of the barriers vary depending on the requirements of the area or the desired level of security. Thanks to its electronic feature, the raising / lowering process can be controlled by any type of card reader, remote control, biometric readers that recognize fingerprints, automatic plate recognition system or any access control system, even with a simple control button. In addition, the system; safety accessories such as magnetic loop detectors, photocells, flashing lights or red / green traffic lights can be easily integrated. If desired, barriers in a particular area, or even in an entire city, can be connected to a control center and opened and closed remotely with a single touch.

ROAD BLOCKER



ROAD BLOCKER

Road Blocker 3 T



Designed and manufactured, from the most robust steel box sections and fully compliant with BS6571 Pt 4. Controlled via a powerful hydraulic pump and drive ram system, under the control of its own PLC. Newgate's kerbs/blockers are available in two grades, 3 tonne and six sizes, and are all finished in a galvanised and fully painted environmental protection system.

Road Blocker 12 T



Designed and manufactured, from the most robust steel box sections and fully compliant with BS6571 Pt 4. Controlled via a powerful hydraulic pump and drive ram system, under the control of its own PLC. Newgate's kerbs/blockers are available in two grades, 12 tonne and six sizes, and are all finished in a galvanised and fully painted environmental protection system.

HRB Road Blocker

Energy: 110/220V-60/50 Hz. AC (%±10), 24V DC
 Single Model: during stand-by ~10W, during passages max. ~39W
 Centre Model: during stand-by ~20W, during passages max. ~78W
 Arm: Soft Blue floodlight, 10 mm tempered glass (Opt: lexan glass)
 Dimensions: Single: 1465x1030x325+arm length (275) mm
 Centre: 1465x1030x325+arm length (275x2) mm
 Single Center Weight: 75 kg with Aluminum and Coatings 90 kg with stainless steel or coatings 84 kg 99 kg Granite cover difference 23 kg 23 kg
 Glass Coating Difference 45 kg 45 kg
 Body: Centering panels with both entry sections in 304 DIN board, grate satin stainless steel, facade cladding in standard grid patterned stainless steel (Opt.: Specially colored anodised aluminum (red, blue, black) or gold polished stainless steel, glass, etc.).
 Top Cover: Standard: Granite-Stone 20mm, 3 color options (red, blue, black)
 Opt.: Stainless steel, wood, etc.
 Control system: Dry contact or TTL.CMOS. It can be controlled with any voltage between 5-48V. It works in harmony with all kinds of access control units and coin systems.
 The system works smoothly with all kinds of access control units. Dry contact for clearance, TTL, CMOS, GND etc. triggered by police. (Opt.: controlled via RS / 485.) All connections are insulated and protected.





METAL DETECTOR

Metal detector is a device developed for the detection of nearby metal articles. Metal objects can instantly be detected via this device in all entries and exits of all working places, trade centers.

Metal Detector XYT2101A6



Sensitivity adjustable: Each zone has 100 degree sensitivity (Each zone sensitivity level from 0-99, whole sensitive level adjustment: 0-4095) Six mutual over-lapping detecting zones; Simultaneous alarm from multi- zones; (12 zones can be customized) 4 columns LED light alarm on both door panels, ascertain the layout of metal articles accurately 16 LED indicator lights for metal signal on the panel Easy operating, each function setting with corresponding keys Automatically count passengers and alarm times Harmless to human body: harmless with heart pacemaker, pregnant women, magnetic floppy, recording tapes, etc.

Metal Detector XYT2101B(8-16-24 zones)



Automatically System Testing self-diagnostics when power on for the door panels, LED alarm sound, Zoning Management:4 size with LEDlight The detection zone can be adjusted into 8, 16, 24 Zones. Alarm Count: Passenger Count: It can record 20000 alarm counts and can query the alarm time. Detecting Speed: The maximum speed is 100 P/min, can downward adjust the detecting speed. LCD backlight: 0-99S to display continuously, adjustable Recognition the size of the metal objects by different sound Vibration Protection: Preventing vibration interference lead to false alarms Alarm Sound: 1-25S alarm time, 0-255 adjustable alarm volume.

Metal Detector XYT2101S (6-12-18 ZONES)



LCD screen with Infrared remoter controller, both Chinese & English program, easy to operate. Adopt advanced digital signal processing control replaced traditional analog signal control, better stability. Program Self-diagnostic when power on, automatically checking left and right door panel, LED light and choose the best working frequency. Detecting Zones: 16 detecting zones. Separate left and right side detection. Simultaneous alarm from multi- zones; Sensitivity adjustable: Each zone has 255 degree sensitivity level, three patterns: High, middle, Low for different requirements. Preset the metal size, weight, volume, location to exclude the coin, key, belt. Sound Alarm: 1-25s alarm time, 255 different sound volume for choose

Metal Detector XYT2101A2 (6 ZONES)



Program Self-diagnostic when power on, automatically checking left and right door panel, LED light and choose the best working frequency. Adopt advanced digital signal processing control replaced traditional analog signal control, better stability. Six mutual over-lapping detecting zones, Simultaneous alarm from multi- zones; Sensitivity adjustable: Each zone has 255 degree sensitivity level, three patterns: High, middle, Low for different requirements. Preset the metal size, weight, volume, location to exclude the coin, key, belt. Sound Alarm: 1-25s alarm time, 255 different sound volume for choose

Super Scanner Hand-Held Metal Detector



Detects medium sized pistol from 9" distance; large knife from 6"; razor blades and box cutters from 3" distance; foil-wrapped drugs and tiny jewelry from 1".Made of durable ballistic weave material. Can be worn on a belt or can be mounted in a car.

XRC 100-100DV



Having been a services company for many years, X-Ray Center understands the importance of simplicity of design and ease of maintenance. Both these philosophies were incorporated in the R&D of all XRC models in order to minimize down time with ease of maintenance in mind. The benefits of both philosophies is increased ROI for each end user of a XRC brand x-ray system. Continuing with our commitment of minimized down time, our proprietary x-ray scanning operating system runs on a stable Linux platform insuring greater system stability and uptime. XRC brand systems meet all international safety regulations including CE requirements, USFDA certifications, and ISO 9001



VIDEO SURVEILLANCE

Video surveillance systems are not considered the most common protection system in vain. Even the presence of cameras in places prevents the endeavors of robbery in many cases. Video surveillance plays an effective role in determining the participants of the event, ensuring public security and surveillance. CCTV consists of minimum one video camera and one observing monitor. To record the happenings, DVR (digital video recorder) may be utilized. Only the people, who directly join, are entitled to observe the video scenes. Despite of CCTV systems, cameras are connected to IP network, it means to internet in IPTV (Internet Protocol Television) system. And it allows the observation of place, from all over the world, using any standard browser by internet.

Surveillance information can be easily saved by using the DVR.

Our company presents video surveillance equipments and common solutions in this topic in a wide range. Fixation is adjusted to observe a certain defined place.

- PTZ (pan, tilt, zoom) – allows more common and perfect monitoring from the management center of the territory and facilities interesting for operator by drawing closer (zoom), by moving away and by twirling to different angles.
- Dome
- Vandal roof
- Bullet
- Classic

HAC-B3A51-Z

* The parameters and datasheets below can only be applied to A51-S2 series

* In order to use the 5MP 16:9 HDCVI camera, the firmware of XVR must be upgraded to V4.001.0000001.0.R.200908 or later version.

- > Max. 25 fps@5MP (16:9 video output)
- > CVI/CVBS/AHD/TVI switchable
- > 2.7 mm-12 mm motorized lens
- > Max. IR length 40 m; Smart IR
- > IP67; DC12V

SD60230U-HNI-SL

- > 1/2.8" 2Megapixel STARVIS™ CMOS
- > Powerful 30x optical zoom
- > Starlight technology
- > H.265 Encoding
- > Max. 50/60fps@1080P
- > Auto-tracking and IVS
- > Support PoE+
- > IP68, IK10, NEMA 4X
- > Material: 316L Stainless steel

TPC-BF2221

- > 256x192 VOx uncooled thermal sensor technology
- > Athermalized Lens (thermal), Focus-free
- > 1/2.8" 2Megapixel progressive scan CMOS
- > Support ROI, motion detection, color palettes
- > Smart alarm linkage with white light & loudspeaker
- > Support Fire detection & alarm
- > Built-in 2/2 alarm in/out
- > Micro SD memory, IP67, PoE/ePoE

HAC-B1A51

* The parameters and datasheets below can only be applied to A51-S2 series

* In order to use the 5MP 16:9 HDCVI camera, the firmware of XVR must be upgraded to V4.001.0000001.0.R.200908 or later version.

- > Max. 25 fps@5MP (16:9 video output)
- > CVI/CVBS/AHD/TVI switchable
- > 3.6 mm fixed lens (2.8 mm optional)
- > Max. IR length 20 m; Smart IR
- > IP67; DC12V

TPC-PT8420A-TB

- > 8MP, 1/2.8" CMOS image sensor, low illuminance, high image definition
- > Outputs max. 8MP (3840 × 2160) @20 fps (AI function enabled by default) and supports 8MP (3840 × 2160) @25/30 fps (when AI function disabled)
- > H.265 codec, high compression rate, low bit rate
- > Built-in IR LED, max. IR distance: 60 m
- > Supports max. 256 G Micro SD card
- > 12V DC/PoE power supply
- > IP67 protection
- > SMD Plus

NVR5816/5832/5864-4KS2

- > 16/32/64-channel IP video access
- > Smart H.265+/Smart H.264+/H.265/H.264/MJPEG; H.265 auto switch
- > Max 320 Mbps incoming bandwidth
- > Up to 24MP resolution for live view and playback
- > 1-channel fisheye dewarping (AI by NVR)
- > AI by Camera: Perimeter protection; face detection and recognition; SMD Plus; video metadata; ANPR; people counting; stereo analysis; crowd distribution; heat map

IVSS7008

- > Industry embedded micro-controller
- > Max 512Mbps incoming bandwidth
- > 128-channel IP video access
- > Supports RAID 0/1/5/6/10
- > 3 HDMI/2 VGA video output

TPC-DF1241

- > Uncooled VOx thermal sensor technology
- > Athermalized lens (thermal camera), focus-free
- > 1/2.7" 4Megapixel progressive scan CMOS
- > Support ROI, motion detection, color palettes
- > Smoking and call behaviour detection
- > Support fire detection & alarm
- > Built-in 1/1 alarm in/out
- > Micro SD memory, IP67, PoE
- > Smart linkage with strobe light & audio
- > Dual image fusion (visible and thermal images)

HAC-HDBW3200F

- > Max 30fps@1080p
- > CVI/CVBS/AHD/TVI switchable
- > Built-in Mic
- > 2.8 mm fixed lens
- > Max. IR length 20 m, Smart IR
- > IP67, IK10, DC12V

IPC-HDBW4231F-E2-M/M12

- > Two 1/2.8" 2Megapixel progressive scan STARVISTM CMOS
- > H.265/H.264 dual-stream encoding
- > 25/30fps@2M(1920x1080)
- > Smart Detection supported
- > WDR(120dB), Day/Night(ICR), 3DNR, AWB, AGC, BLC
- > Multiple network monitoring: Web viewer, CMS(DSS/PSS) & DMSS
- > 2.8mm fixed lens (3.6mm optional)
- > Max. IR LEDs Length 20m
- > Micro SD memory, IP67, IK10, PoE

IPC-HF71242F

- > 12MP 1/1.7" CMOS image sensor, high image definition
- > Outputs max. 12MP (4000 x 3000) @25/30 fps
- > H.265 codec, high compression rate, ultra-low bit rate
- > Rotation mode, DWDR, 3D NR, HLC, BLC, digital watermarking
- > ROI, SVC, SMART H.264+/H.265+, flexible coding, applicable to various bandwidth and storage environments
- > Perimeter Protection, Face Detection, Video Metadata, ANPR, People Counting, Queue Management
- > Alarm: 2 in, 2 out; audio: 2 in, 1 out; RS-485; BNC; supports max. 256 G SD card
- > 24V AC/12V DC/PoE power supply; 12V DC power output, max. current 165mA; easy for installation.
- > Five streams for three-channel HD video

PTZ1A225U-IRA-N

- > 1/2.8" 2Megapixel STARVIS™ CMOS
- > Powerful 25x optical zoom
- > Starlight technology
- > H.265 Encoding
- > Max. 50/60fps@1080P
- > Auto-tracking and IVS
- > Support PoE+
- > IR distance up to 150m
- > IP67, IK10

TPC-PT8420A-TB

- > 400x300 VOx uncooled thermal sensor technology
- > Athermalized Lens(thermal), Focus-free
- > 1/1.9" 2Megapixel progressive scan Sony CMOS
- > Powerful 30x optical zoom
- > Support temperature measurement
- > Support fire detection & alarm
- > Max 160°/s pan speed, 360° endless pan rotation
- > Up to 300 presets, 5 auto scan, 8 tour, 5 pattern
- > 7/2 alarm in/out
- > Micro SD memory, Ip67



TURNSTILE

The electromechanical turnstile is designed to control human flow and access control at checkpoints of enterprises and organizations, administrative offices, at the entrance and exit of stadiums, entertainment centers, parks and so on.

Flame Technologies offers four main types of turnstiles: compact turnpike tripods in the form of protection, curbstone-turnstiles, turnstile-tripods, medium-height rotors and full-growth rotors..

500 E



Power: 110/220 V -60/50Hz AC (%±10), 24 V DC. Rated Power Consumption ~11W.
During passage (Instantaneous Max Power) 60W
Handles: Ø40x2mm Stainless steel (Ops.: Hard aluminum mat anodized) and can be removed and installed one by one.
Dimensions: 500x95x300+Arm length (470mm)
Weight: ~36 kg
Body feature: Outdoor waterproof, 1.5 mm 304 stainless steel (SS).
Operating temperature, humidity, IP Class, Average number of failures: (-200C)-(+680C)
(OPS: with -500C heat positive), RH 95% (±2% condensing), IP 54 (Ops. IP 56), 1M passage
Control system: Dry contact or TTL CMOS. It can be controlled with any voltage between 5-48V. It works in harmony with all kinds of access control units and coin systems.
Ops.: Functions can be controlled with LAN or RS-485, RS 232.
Passage speed: Mechanical Passage Capacity - For Standard Turnstiles: Max.97 passage / minute.
Nominal: 41 men / minute. For Motorized Turnstiles: Max 48 passes / minute, Nominal: 29 men / minute.
First action: less than 0.3 second
Indicators: Side status and overhead indicators are optional.

Swing Gate Turnstile



Operating Voltage
100-230 VAC, 47-60 Hz
Power Consumption
22 W during passages, 9 W during stand-by.
Operating Temperature
0° / +70°
Opening-Closing Speed
~1.5 sec.
Passage Width
60-80 cm
Weight
~40 kg
Security Level
Deterrent.
Areas of Use
Suitable for indoor use.
Accessories
Remote control unit. Stainless steel opposite unit. Photocell with opposite unit.
Meter. Stainless steel reading bracket. Stainless steel bottom plate. Logo engraving

LTOP 111



Operating Voltage
100-230 VAC, 47-60 Hz
Power Consumption
58W during passage, 9W during standby (For two wings).
Operating Temperature
0° / +70°
Passage Speed
~40 persons / minute.
Passage Width
50 cm
Weight
~79 kg (Single wing)
Security Level
Deterrent.
Areas of Use
Suitable for indoor use.
Accessories
Logo engraving. Sticker. Remote control unit. Stainless steel reader apparatus.
Meter. Button control unit. Stainless steel reader leg. Stainless steel bottom plate.

LTOP 301



Used in spaces like the banks or corporate headquarters where aesthetic excellence is a priority to impress the visitors. The architects and interior designers have many options to customize this model and create an rich and opulent look. Among the decorative materials that can be used to transform this model into a visual masterpiece are marble and granite as well as leather and all kinds of wood finish including walnut, oak, and olive. Operation LTOP optical turnstiles form a corridor.

In the middle of this corridor, there's a wing obstacle made up of glass or plexiglass. When the visitors have their cards ready by the card reader, the wing opens. While the visitors are passing through the gate, if another person wants to take advantage of the open turnstile and tailgate behind the first visitor, the obstacle closes and blocks the passage immediately and sets off the alarm. However, if the sudden closure of the wing has the potential to harm an individual, it does not close but the alarm continues to alert the security.

Operation
Controlled or control-free entrance/exit in both directions.

Chassis
AISI 304 quality stainless steel. Optional: Black stainless steel.

Wing
With high glass, linear winged 10 mm tempered glass. Height: 170 cm.

Optional: Smoke colored glass. Height: 130 cm / 150 cm

Upper Table

10 mm black tempered glass. Optional: Wood.

Functions

Works bidirectionally and allows the passage of a single person only with its microprocessor control. Electronic passage memory feature saves in memory card swipes that occur before a passage is completed and allows them to pass without closing the wings. Optional: 2 x RS232 and 1 x RS485 communication ports.

Sensors

8 reciprocal sensors in every corridor.

Emergency Mode

Turnstile switches to emergency mode upon the receipt of a signal from fire detection system and wings open.

Optional: In case of power shortage, wings automatically switch to open position with the power supplied from the accumulator (Fail Safe).

Weight

~148 kg (Single wing)

Passage Speed

~40 persons / minute.

Areas of Use

Suitable for indoor use.

LTF 114 D



Full height turnstiles are used where an access attempt by using sheer force is expected to be a factor. What immediately full height turnstiles make it obvious is the fact that one cannot cross by jumping under or over it. In these types of turnstiles, strength rather than aesthetics has been stressed as a priority. Main Types Of Application Prisons And Correctional Institutions When full height turnstiles are installed at entry and exit points, no persons without the proper access authorization can enter or leave the site or the building.

In this type of installation the carelessness or negligence of the staff responsible for the door security play no role since these turnstiles operate with card readers. Stadiums And Sports Facilities These facilities require an expensive ticket for entry. That's why the TANSA full height turnstiles for these types of installations are designed and manufactured to make sure that they cannot be pushed or broken open by muscle power. These units convey the message that it's not worth taking any risks for an unauthorized access since it's not physically possible.

Operation

Adjustable manual passage to either direction. Optional: Motorized

Chassis

1.5 mm thick, AISI 304 quality stainless steel.

Optional: AISI 316 quality. With various color options electrostatic powder coated.

Rotor and Arms

4 wings, 10 arms. AISI 304 quality stainless steel.

Optional: AISI 316 quality. With various color options electrostatic powder coated.

Passage Speed

~20 persons / minute.

Passage Width

57 cm

Weight

~345 kg

Security Level

High Security.

LTF 514



Full-height turnstiles are in general designed to provide maximum security and easy passage in locations where some users might be tempted to resort to brute force for access. Yet, given the wide variety of ways in which they're deployed, full-height turnstiles are installed today in the lobbies of luxurious high-rises and opulent corporate headquarters as well. That's why TANSA is proud to offer LTF 513, a full-height turnstile that enhances the "curb appeal" of even the most exclusive commercial space. This "signature series" turnstile is designed with those environments in mind where visual appeal and refined aesthetics is a top priority. One defining feature of LTF 513 full-height turnstile is the way its glass wings deny any access to personnel or cargo when no access attempt is made. Thanks to this feature, LTF 513 offers the benefit of maximum access security while enhancing the aesthetics of its environment. All mechanical parts and electromechanical control systems of LTF 513 are manufactured at TANSA's high-tech manufacturing facilities.

Operation

Adjustable manual passage to either direction. Optional: Motorized

Chassis

10 mm tempered glass and 1.5 mm thick, AISI 304 quality stainless steel.

Optional: AISI 316 quality. With various color options electrostatic powder coated.

Rotor and Arms

4 pieces, 10 mm tempered glass. AISI 304 quality stainless steel rotor.

Optional: AISI 316 quality. With various color options electrostatic powder coated.

Passage Speed

~20 persons / minute

Passage Width

64 cm

Weight

~430 kg

Security Level

High Security.



ACCESS CONTROL

Who, when and where can get access?

These questions will be responded by our integrated access control, access management and working time registration system. It is an effective resource allowing the track and manage of the access by persons or vehicles to the area according to the established policy of the company. Working time registration system provides the registration of working and non-working hours, registration of delays and determines the number of employees in controlled area in specified time interval. These systems have become an integral part of present day business by their functional and discipline making features. Our proposed registration system gives an opportunity to receive full information about how much time was spent by your employees at the working place. The system will completely remove even possible small lies. Access Control is an invaluable system for controlling the access completely, to limit and register door entry and exit system.

SPEEDFACE-V5L[TI]



Features

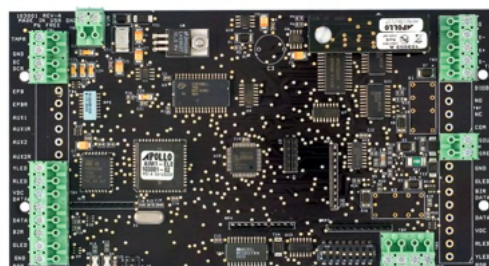
- Visible Light Facial Recognition
 - Better hygiene with touchless biometric authentication, temperature detection and masked individual identification
 - Thermal Imaging Temperature Detection, 0.1s high Speed detection, measurement distance of 30 ~ 120cm
- | | |
|--------------------------|--|
| Display | 5-inch Touch Screen |
| Face Capacity | 6,000 |
| Palm Capacity | 3,000 |
| Fingerprint Capacity | 6,000 (Standard); 10,000 (Optional) |
| Transactions | 200,000 |
| Operation System | Linux |
| Standard Functions | ADMS, T9 Input, DST, Camera, 9-digit User ID, Access Levels, |
| Hardware | 900MHz Dual Core CPU, Memory 512MB RAM / 8G Flash, |
| Communication | TCP/IP, WiFi (Optional), Wiegand input / output, RS485 |
| Access Control Interface | 3rd Party Electric Lock, Door Sensor, Exit Button, Alarm output, |
| Facial Recognition Speed | ≤1s |
| Biometrics Algorithms | ZKFace V5.8 & ZKFinger V10.0 & ZKPalm V12.0 |
| Power Supply | 12V 3A |
| Operating Humidity | 10% - 90% |
| Operating Temperature | 16°C ~ 35°C (60.8°F ~ 95.0°F) |
| Dimensions (W*H*D) | 92.0 * 262 * 23.5 (mm) |
| Supported Softwares | ZKBioAccess |

AIM-1ELE



Intelligent control for up to 32 floors or other controlled areas
 'Floor Selected' Feature prevents users from accessing multiple floors with one card read
 3-color LED Support
 Surface Mount technology (SMT)
 Flash memory

ASP-4



300 access levels, 50 access levels per card, up to 127 card formats.
 Cluster up to 32 devices.
 Cluster master provides central communication point to software host.
 No constant polling, on-demand communication as needed.
 16 supervised zones, 1 unsupervised tamper
 8 relay outputs, expandable with DRS
 Up to 127 card formats
 2 10/100 Ethernet Interfaces

SpeedFace-H5L [P] is a fully upgraded version of the SpeedFace-H5L Visible Light Facial Recognition Terminal, using intelligent engineering facial recognition algorithms and the latest computer vision technology. It supports both facial and palm verification with large capacity and speedy recognition, as well as improves security performance in all aspects.

Display	5-inch Touch Screen
Face Capacity	6,000
Palm Capacity	3,000
Fingerprint Capacity	6,000 (Standard); 10,000 (Optional)
Card Capacity	10,000
Transactions	200,000
Operation System	Linux
Standard Functions	ID Card, ADMS, T9 Input, DST, Camera, 9-digit User ID
Hardware	900MHz Dual Core CPU, Memory 512MB RAM / 8G Flash
Communication	TCP/IP, WiFi (Optional), Wiegand input / output, RS485
Access Control Interface	3rd Party Electric Lock, Door Sensor, Exit Button, Alarm output
Optional Function	13.56MHz IC Card (MF)
Facial Recognition Speed	≤1s
Biometrics Algorithms	ZKFace V5.8 & ZKFinger V10.0 & ZKPalm V12.0
Power Supply	12V 3A
Operating Humidity	10% - 90%
Operating Temperature	-10°C ~ 45°C (14°F ~ 113°F)
Dimensions (W*H*D)	134.93 * 166.93 * 21.5 (mm)
Supported Softwares	ZKBioAccess

SPEEDFACE-H5L[P]



HAC-B3A51-Z

- > 4.3 inch LCD touch screen; resolution 480×272
- > With 2 MP wide-angle dual lens, white fill light, IR light
- > Support face, card and password unlock; unlock by period
- > User data can be stored at the access controller; can hold 1500 face images and work without network
- > Face-camera distance: 0.3m-1.5m
- > Face verification accuracy 99.5%; face comparison speed 0.3s per person; low false recognition rate Support liveness detection

ASI8223Y-A-V3

- > Aluminium alloy housing with wire-drawing treatment; IP65 (Apply silica gel to gaps between the device and the wall. Liquid sodium silicate is recommended. For details, see the quick start guide.)
- > 10.1 inch LCD touch screen; resolution 1280×800
- > With 2 MP wide-angle dual lens, white fill light, IR light, and WDR
- > Support face and password unlock; unlock by period
- > User data can be stored at the access controller; can hold 100, 000 face images and work without network
- > Face-camera distance: 0.3m-2.0m
- > Face verification accuracy ≥99.5%; face comparison speed ≤0.2s per person; low false recognition rate Support liveness detection

ASI1212F/ASI1212F-D

- > PC+ABS housing material, and glass material for front panel, applicable for indoor scenario
- > 2.8 inch LCD touch screen display with resolution of 240×320
- > Deep learning algorithm makes fingerprint recognition time 1.5 s
- > Support card, fingerprint, password
- > Support 30,000 users, 30,000 cards, 3,000 fingerprints, 150,000 records
- > Support OSDP, TCP/IP

ASA1222G & ASA1222G-D

- > Adopts 32-bit processor
- > Mechanical buttons, LCD operating interface
- > Built-in high capacity rechargeable lithium battery, up to 2600mAh
- > Supports Mifare card/ID card reading distance 1 cm-3 cm, card swiping
- > Fingerprint verification response time ≤0.5 s, fingerprint recognition
- > Supports three attendance modes: fixed, manual/auto and forced
- > Support shift setting by department and person
- > Support attendance data import and export from USB flash drive
- > Support personnel data, config import and export from USB flash drive
- > Supports attendance record search
- > Supports software attendance and voice prompt
- > Supports online update
- > Operating temperature: 0°C to +55°C, operating humidity: ≤93%

HORUS E1-FP

CPU
Android Version
Memory
Camera
LCD
Verification Mode

Quad-core, 1.5GHz
Android 8.1
RAM 2GB / ROM 16GB
2MP Dual Camera
720°1280, IPS touch LCD
Face + Fingerprint + RFID

SPEEDFACE-H5L[P]

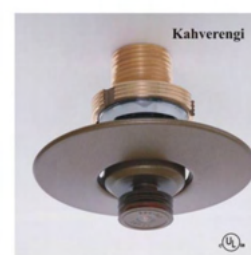
Display
Face Capacity
Palm Capacity
Fingerprint Capacity
Card Capacity
Transactions
Operation System
Standard Functions

5-inch Touch Screen
6,000
3,000
6,000 (Standard); 10,000 (Optional)
10,000
200,000
Linux
ID Card, ADMS, T9 Input, DST, Camera, 9-digit User ID, Access Levels, Groups, Anti-passback, Record Query, Tamper Switch Alarm, Multiple Verify Modes.



FIRE SYSTEM

Automatic water-based firefighting system
 Automatic carbonate-based firefighting system
 Primary firefighting means
 Foam generator
 Hydrant
 Fire cupboard
 Fire board
 Fire door
 Smoke dissolving





ALARM SYSTEM

The purpose of the fire alarm systems used to ensure the safety of life and property is to warn people and take measures at an early stage of the fire having mastered the situation.

It is used by optical fog, ionized fog, heat rise rate, continuous heating, combined thermal + fog, fire and beam photoelectric detector, on-board detector with using sampling methods, manual warning buttons and sirens in the systems of each detector of the protected place of physical and functional characteristics in various methods, with the mastered characteristics in the channels and types of radiation.

In addition, Flame Technologies will provide you with the opportunity, after the completion of the workflow, during glass breaking and some other cases, to make a direct call to the police station or to your mobile phone.

HUB 2 PLUS



Communication with the outer world is critical for alarm control panels. Its reliability guarantees prompt delivery of alarm signals to Alarm Receiving Center and system users.

Hub 2 Plus makes external communication stability absolute. It has 4 communication channels and supports LTE. Such configuration allows you to connect the device to two separate Internet providers over Ethernet and Wi-Fi while having two cellular services ready for back up. Switching between channels happens seamlessly in seconds.

Hub 2 Plus supports 64 scenarios that minimize human impact on the security of a location. It can automatically arm and disarm the entire security system or certain groups by schedule. Moreover, it can instantly activate a smoke security machine in case of intrusion, cut power supply and turn on emergency lighting in case of fire, or cut water in case of leakage. Using automation devices, Hub 2 Plus can control lights, electric locks, and roller shutters. Scenarios can be activated in response to security mode changes, alarm triggerings, or Button commands.

MOTIONCAM



- Photo delivery in under 9 seconds
- Sees in the dark
- Operates up to 4 years on the pre-installed batteries
- Communicates at a distance of up to 1700 m from the hub

More than a photo. Faster than a video. With MotionCam, you'll know about the actual situation at home even before the burglars understand that they're busted. An animated series of photos follows the instant motion alarm for an accurate situation appraisal.

MotionCam is designed to control your security, not your personal life. The motion detector is unable to take pictures by request. The camera activates only in response to a motion alarm. The data is encrypted throughout the processes of transmission and storage. No one analyzes it, even the AI. You won't need to live under the constant supervision of the security cameras to know why the alarm went off.

STREETSIREN DOUBLEDECK

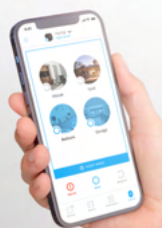


KeyPad Plus is a combination of design, advanced encryption technology, and elaborated user experience for the most straightforward and protected security management. Arm and disarm Ajax, activate Night Mode and manage specific groups with a Pass card or Tag1 key fob.

To identify users quickly and securely, KeyPad Plus features the DESFire® technology. It is the best-in-class contactless solution to identify a user by card or key fob.

DESFire® is based on the ISO 14443 international standard and combines comprehensive 128-bit encryption and copy protection. This technology is also used in transportation systems of European capitals and access systems at NASA.

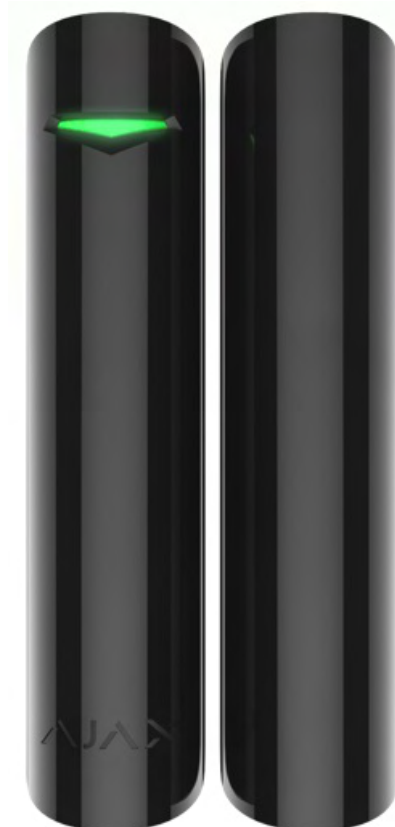
The all-new KeyPad Plus firmware gets the most out of the pre-installed batteries. Even with daily use of the contactless identification function, the keypad will work for 3.5 years without replacing batteries. And with the card and key fob reader disabled, the battery life reaches 4.5 years. KeyPad Plus will warn a monitoring station and users in advance about the need to replace the batteries



STREETSIREN DOUBLEDECK



DOORPROTECT PLUS



Wireless opening detector notifies of first signs of intrusion into the room through the door or window. It is installed even on roof windows which can be left open when leaving the house.

- Authentication to prevent forgery
- Jamming detection and communication channels encryption
- Tampering alarm
- Operates up to 5 years without battery replacement
- Registers change in vertical slope angle, bangs and vibration
- External contact is available for connecting third-party detectors

Principle of operation

The device detects the door being opened by means of British-made hi-end reed switches on which the magnetic field acts. It can operate in the transmitter mode, sending a signal from the wired sensor to the hub.

StreetSiren DoubleDeck needs less than a second to activate a powerful siren and bright LED indicators in response to an alarm signal. Any break-in will be immediately exposed.

LED indication and short beeps of the buzzer remind users that premises are armed and delay when entering feature is active. The risk of a false alarm becomes significantly lower. StreetSiren DoubleDeck is flexible when it comes to settings which makes it as relevant in a quiet gated community as in a loud industrial area. The buzzer can be set to generate sound from 85 to 113 dB for an adjustable period: 3 to 180 seconds. Or it can be completely silent when the device is set to respond to alarm triggerings only with LED indication. The Ajax app allows engineers to choose detectors that activate the siren. It helps to prevent awkward situations when neighbors are notified every time that a washing machine leaks.

Buzzer loudness level up to 113 dB
Alarm duration length up to 180 seconds



SMART BUILDING | SMART HOME



Illumination



Curtains



TV-DVD, Sound system



Air conditioner, heating system



Unlimited systems and timer



Voice control



Security and alarm system



Video door entry system and IP intercom



Energy saving

Working temperature: -20 °C to +70 °C
Relay output: 1A

A compatible system for all products, such as SMART REMOTE CONTROL, mobile phones and tablets, collecting all the devices in one place, combines them with one touch and works together, matching each other



Hey Siri ...



ANYTIME-ANYWHERE-WORKPLACE-HOTEL IN ALL PROJECTS



CONCERNING SERVICES



VALE SERVICE

The desired clock and the desired output you can steer your car.



ONLINE MARKET ORDER

From a contracted site or business center market you can place the order you want.



ORDER MEALS ONLINE

From contracted food or fast food companies you can place the order you want.



ONLINE DRY CLEANING

From a contracted dry cleaning company you can place the order you want.



SPA APPOINTMENT SERVICE

Over the panel to the center of the spa make an appointment.



RESERVATION SERVICE

In contracted restaurants for family meals make a reservation over the panel.

AUDIO SYSTEM



251® ENVIRONMENTAL SPEAKERS



STUDIO 580



BOSE SMART SOUNDBAR 700



BOSE BASS MODULE 500

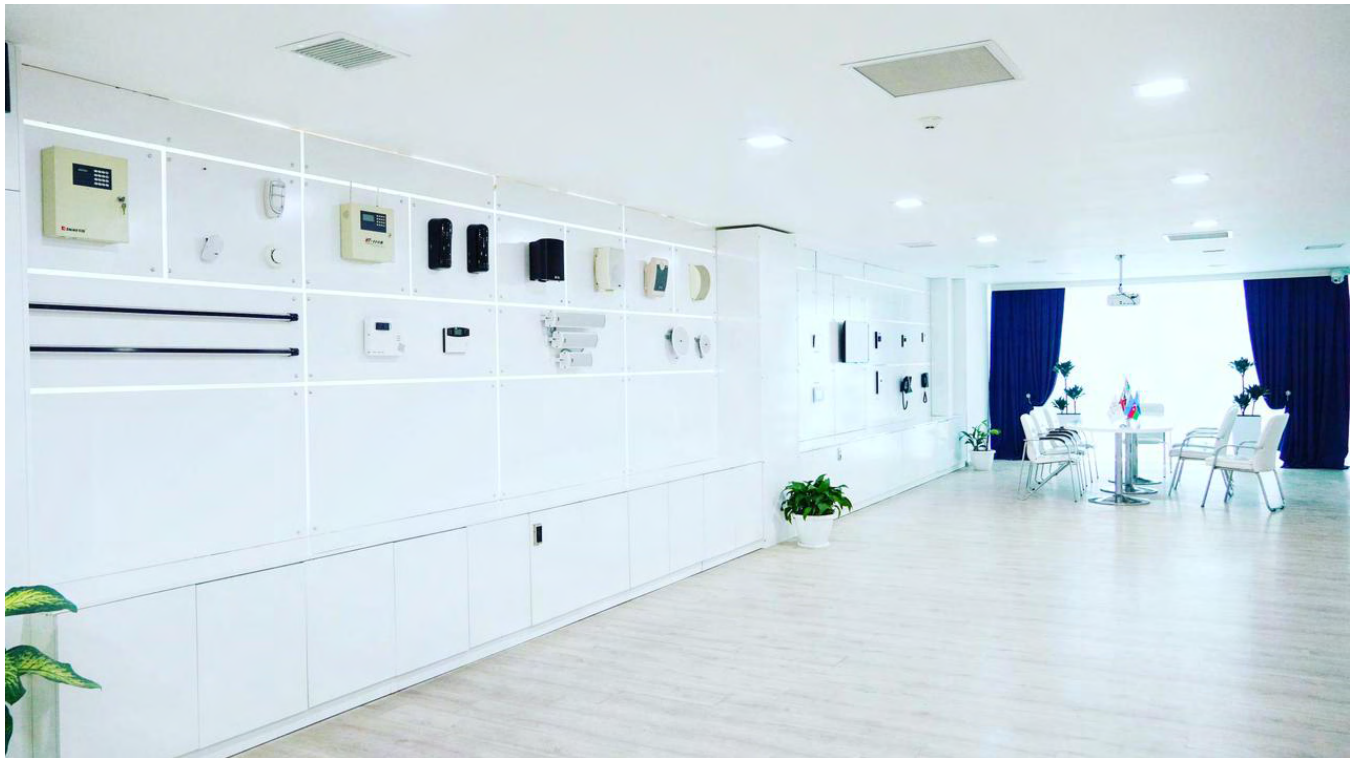


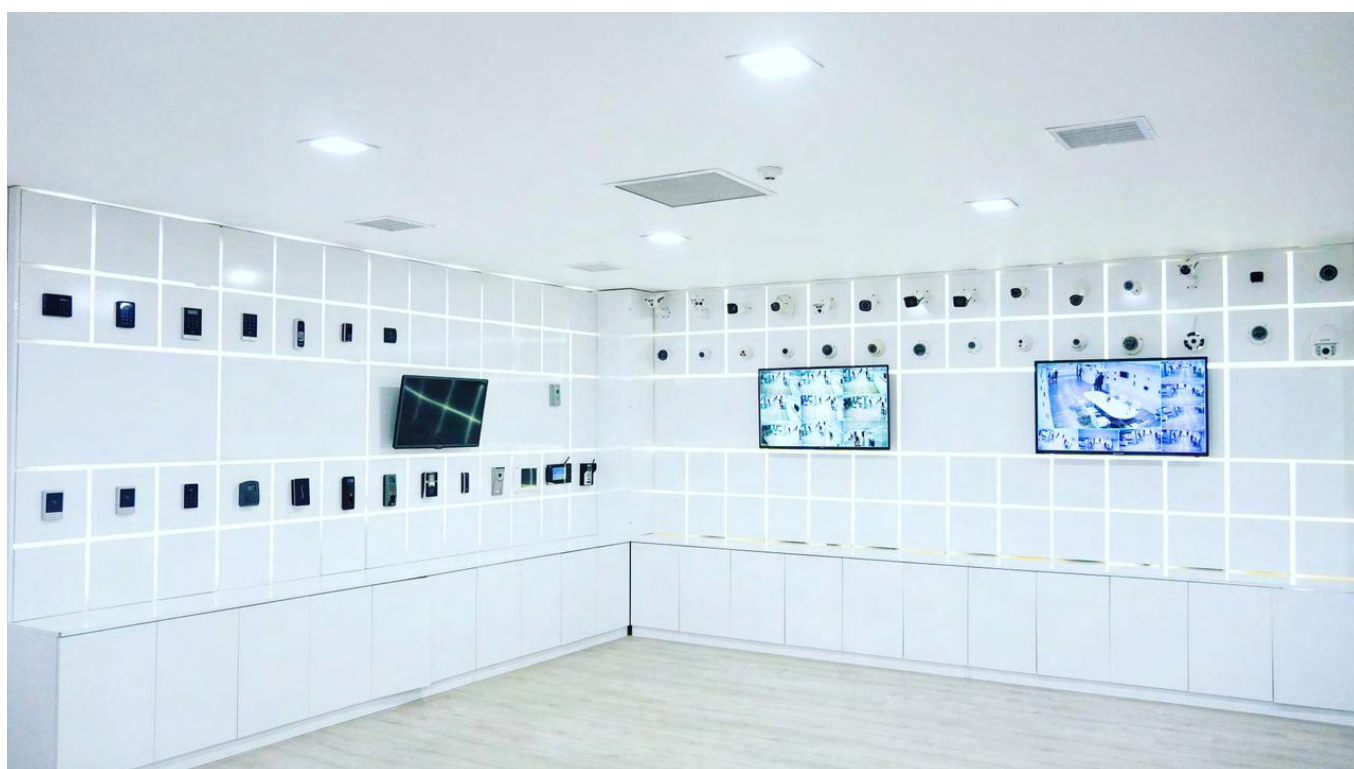
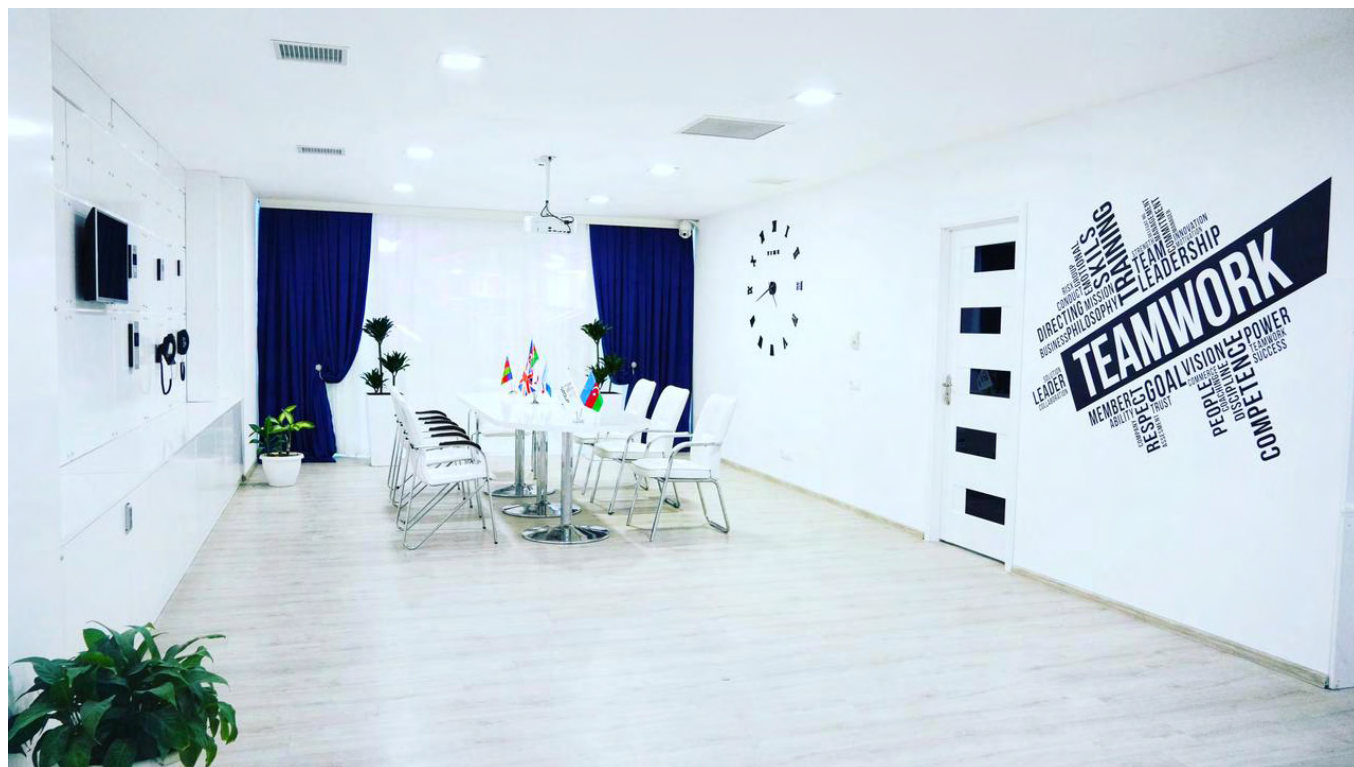
BOSE SURROUND SPEAKERS 700



JBL BAR 5.1 SURROUND









DATA SYSTEM

Network

Based on its professional knowledge and experience, Flame Technologies uses WLAN, WAN, VPN, Intranet, etc. using equipment from various vendors (Cisco, IBM, HP, 3Com, Juniper, Alcatel, etc.) and offers networking and network management.

Fiber - Optic Network - provides extremely high speed data transmission over very long distances. Thanks to this type of communication, it is possible to transmit information in terabits per second. Fiber optic communication is mainly used to create telecommunication networks at different levels (from intercontinental backbone lines to simple computer networks).

VOIP Telephony

VOIP Telephony is a technology used by the Internet to transmit voice signals. It is possible to transmit voice (speech) data by discrete packet transmission method. Transmission of speech (voice) via Internet protocols (packets) is called "VOIP-Telephone" or IP telephony.

Server configuration

1. Construction of centralized server and telecommunication rooms meeting international standards.
2. Well-known vendors server, network equipment installation, technical support.
3. Installation of operating systems Unix (FreeBSD, NetBSD), LINUX (CentOS, RedHat, Fedora, Ubuntu) Windows (server2003,2008)
4. Setting up and managing WLAN, WAN, Intranet networks using various vendor equipment (Cisco, IBM, HP, 3Com, Juniper, Alcatel, etc.). Helpdesk
5. Establishment of services (AD, DNS, DHCP, MAIL, VEBSERVER, IC etc.)



CISCO CATALYST 2960-X



Flash memory 128 MB for LAN Base and IP Lite SKUs, 64 MB for LAN Lite SKUs
 DRAM 512 MB for LAN Base and 256 MB for LAN Lite
 CPU APM86392 600 MHz dual core
 Console ports USB (Type B), Ethernet (RJ-45)
 Storage interface USB (Type A) for external flash storage
 Network management interface 10/100 Mbps Ethernet (RJ-45)

* FC-PGA (Flip Chip-Pin Grid Array)
 Processors Upgr: single capability
 ChipSet: ServerWorks LE 3.0
 Chipset with 133-MHz Front Side Bus
 Bus: PCI Floppy: 1.44 MB,
 Floppy: 1.44 MB, 3.5"

- Integrated Single Channel Wide Ultra2 Controller Module
- Compaq RAID LC2 Controller;- Smart Array 431 Controller;
- Smart Array 532 Controller;- Smart Array 5300 Controller;

HP PROLIANT DL320



YEALINK T54W BUSINESS IP PHONE (SIP-T54W)



4.3" 480 x 272-pixel colour display with backlight
 Adjustable LCD screen
 Built-in Bluetooth 4.2
 Built-in dual-band 2.4G/5G Wi-Fi (802.11a/b/g/n/ac)
 USB 2.0 port for USB recording, wired/wireless USB headsets and EXP50
 Up to 16 VoIP accounts
 Dual-port Gigabit Ethernet
 PoE support
 HAC
 Handset
 Paperless label design
 Wall mountable



STORE SYSTEM

A lot of store owners currently experience theft. That is why Flame Technologies offers you a store system.

You can minimize theft and thereby prevent budget losses with this system. This system is not only for incoming customers to the store, it will also prevent employees from retrieving any goods from the store. The system consists of two levers. It is installed at the door access and attached to each product using special equipment.

iSense 37

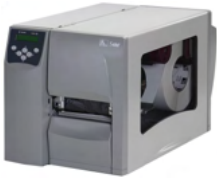
Technology: radio frequency OID
 Guard frequency: 8.2-10MHz
 Charging/ line adapter: 220 V/50Hz/33V
 Signal analyze: DSP (Digital signal processing)
 Working power/electronics: 6.5W
 Temperature: -100C - +500C
 Dimensions: 1 650 x 325 x 90 mm
 Weight: 9 kg
 Label: up to 170 sm
 Gage 40 mm: up to 180 sm
 Gage 50 mm: up to 190 sm
 Type of electronics: distant/inbuilt
 Manufacturer: Nedap

**PG 27**

Technology: radio frequency OID
 Guard frequency: 8.2-10MHz
 Charging/ line adapter: 220 V/50Hz/33V
 Signal analyze: DSP (Digital signal processing)
 Working power/electronics: 6.5W
 Temperature: -100C - +500C
 Dimensions: 1 532 x 273 x 104 mm
 Weight: 13 kg
 Label: up to 150 sm
 Gage 40 mm: up to 160 sm
 Gage 50 mm: up to 170 sm
 Type of electronics: distant/inbuilt
 Manufacturer: Nedap

**Fleureas 45**

Technology: radio frequency OID
 Guard frequency: 8.2-10MHz
 Charging/ line adapter: 220 V/50Hz/33V
 Signal analyze: DSP (Digital signal processing)
 Working power/electronics: 6.5W
 Temperature: -100C - +500C
 Dimensions: 1 668 x 462 x 100 mm
 Weight: 11 kg
 Label: up to 170 sm
 Gage 40 mm: up to 180 sm
 Gage 50 mm: up to 190 sm
 Type of electronics: distant/inbuilt
 Manufacturer: Nedap

**Zebra S4M**

The printer can be connected in parallel and serial to the USB interface by Ethernet or wireless 802.11b. The built-in programming language ZPL and EPL Zebra provide easy integration wherever used. But the function APL helps you easily connect the S4m model without changing the label format.

Argox A200

The Argox barcode printer is a major choice for medium and large businesses thanks to its small size, serial (Rs232), parallel (LPT) and USB interface capabilities and reasonable price. The A200 model, which supports both PPLA and PPLB languages, has the ability to print Direct Thermal / Thermal Transfer.

Digi SM-100pcs (WIFI)

Dimensions: 383.4 x 419.3 x 552.6mm.
 Number of preset keys: 56.
 Capacity: 3/6kg:1-2g, 6/15kg: 2-5g, 15/30: 5-10g.
 Display: 25 digits segments LCD/ Dot Matrix.
 Display resolution: 1/3000(dual range).
 Interface: RS232C.

Motorola Ls1203

-The equipment is resistant to fall from a height of 1.5m.
 -Support for multiple interfaces in a single scanner -Rs232, USB
 -Lightweight, compact, ergonomic design
 -Long term use
 -Less time consuming, easier access and learning
 -Automatic or manual selection
 -Ability to read accurately and quickly for the first time

Motorola LI4278 BT

Kradl Interface - RS232, RS485 (IBM), USB, Keyboard Wedge
 Black, rechargeable battery
 547 reading per a minute, Laser LED Class 1617nm
 The number of readings per a filling is 57,000 or 72 hours
 Operating temperature from 00C to 500C
 Humidity -5% -85% RH
 Radio Bluetooth v2.1 Class 2 radio

Zebex Z-6170

-Number of lines - 20 lines
 -Reading speed -1200 reading / second
 -Printed Problem Barcode - another 30% -UPC/EAN 100%
 -Interface - Keyboard (PS2), serial RS232, USB
 -Height - 161,0mm
 -Depth - 118.0 mm
 -Extension -100,0 mm

Perkon PS 20

-Reading speed -20 reading / second
 -Reading format- 8 different angles and continuous reading
 -Reading speed -1400 reading / second
 -Printed Problem Barcode - another 30% -UPC/EAN 100%
 -Interface - Keyboard (PS2), serial RS232, USB 1.1, Wand, Aux
 -Height - 110,0mm
 -Depth - 65.0 mm

Jolimark Tp510

Type of printing: Thermal printing
 Printing speed: 100 mm / second
 Paper width: 58 mm (2 ")
 Print width: 48 mm
 Resolution: 203 DPI x 203 DPI (Max)
 Paper Thickness: 0.065-0.15 mm
 Serial+USB, Parallel, Ethernet+USB, USB

Sewoo ADP400

-Type of printing: Dot Matrix
 -Paper width: 80 mm
 -Print width: 76.2 mm
 -Printing speed: 2/3 second/line
 -Port - RS232
 -Maximum roll diameter-76 mm
 -Cutter

Motex ML

Prints On Labels With A Maximum Size Of 150x60mm
 Solid Construction
 Thermal Printer, With Printing Speed 100 mm/Sec
 Weighing Range 0,1-30kg With 0,005kg Resolution (e=d)
 Tare Range 0~15kg
 Bright And Distinct 7 Segments VFD Display Clearly Indicates The Computed Data To The Customers
 Ergonomic Keyboard With 78 Keys
 9.000 PLU's (50 Direct + 50 In 2nd And 3rd Level Accordingly)

Aclas LS6

Measuring Range: 2/5g, 5/10g
 Verofocatom scale interval: 6kg/15kg, 15kg/30kg
 Printing Speed: 90mm/s
 Power Supply: AC 100-240V, 50-60Hz
 Working humidity: 5%-85%R.H



GSM AMPLIFIER

In this age of technology, the lack of a network can paralyze our lives and our work.

Flame Technologies offers you a solution to this problem. By installing a GSM booster system, you always stay in the network, so you receive every call, message, mail instantly.

GSM Signal Booster devices solve 100% guaranteed gsm signal problem in your home, workplace, factory, office



GSM ANTENNA

Suitable for all European networks (calls and 3G / 4G internet)
 Powerful all-in-one mobile booster for houses and buildings
 Easy to install. Ready for use
 Free of interference. CE! approved
 Low energy consumption
 Indoor coverage up to max. 300 sqm
 Art.nr. RF-FB10S
 Price excl. VAT



MOBILE SIGNAL BOOSTER



Suitable for all European networks (calls and 3G / 4G internet)
 Powerful all-in-one mobile booster for houses and buildings
 Supplied with antennas, coaxial cables and accessories
 Easy to install. Ready for use
 Free of interference. CE! approved
 Low energy consumption
 Indoor coverage up to max. 2000 sqm
 Art.nr. RF-20-5B-L
 Price excl. VAT

Suitable for all European 900 + 1800 + 800 MHZ providers
 Powerful all-in-one repeater for houses and buildings
 Supplied with antennas, coaxial cables and accessories
 Easy to install. Ready for use
 Free of interference. CE! approved
 Low energy consumption
 Indoor coverage up to max. 500 m2
 Art.nr. RF LED10-A
 Price excl. VAT

GSM TRI BAND REPEATER





XAN
CONSTRUCTION



CONSTRUCTION

Xan Construction began as a general contractor in 2020 over the years, the group has undertaken many challenging projects accumulated skills, know-how and experiences in design and build solutions, project management services, building trades and related engineering work. Today Xan Construction takes on the role of main contractor for small to medium size projects and performs project management services to coordinate specialist trades for industrial/commercial projects. We also provide design inputs and engineering solution as value-add services to our clients.

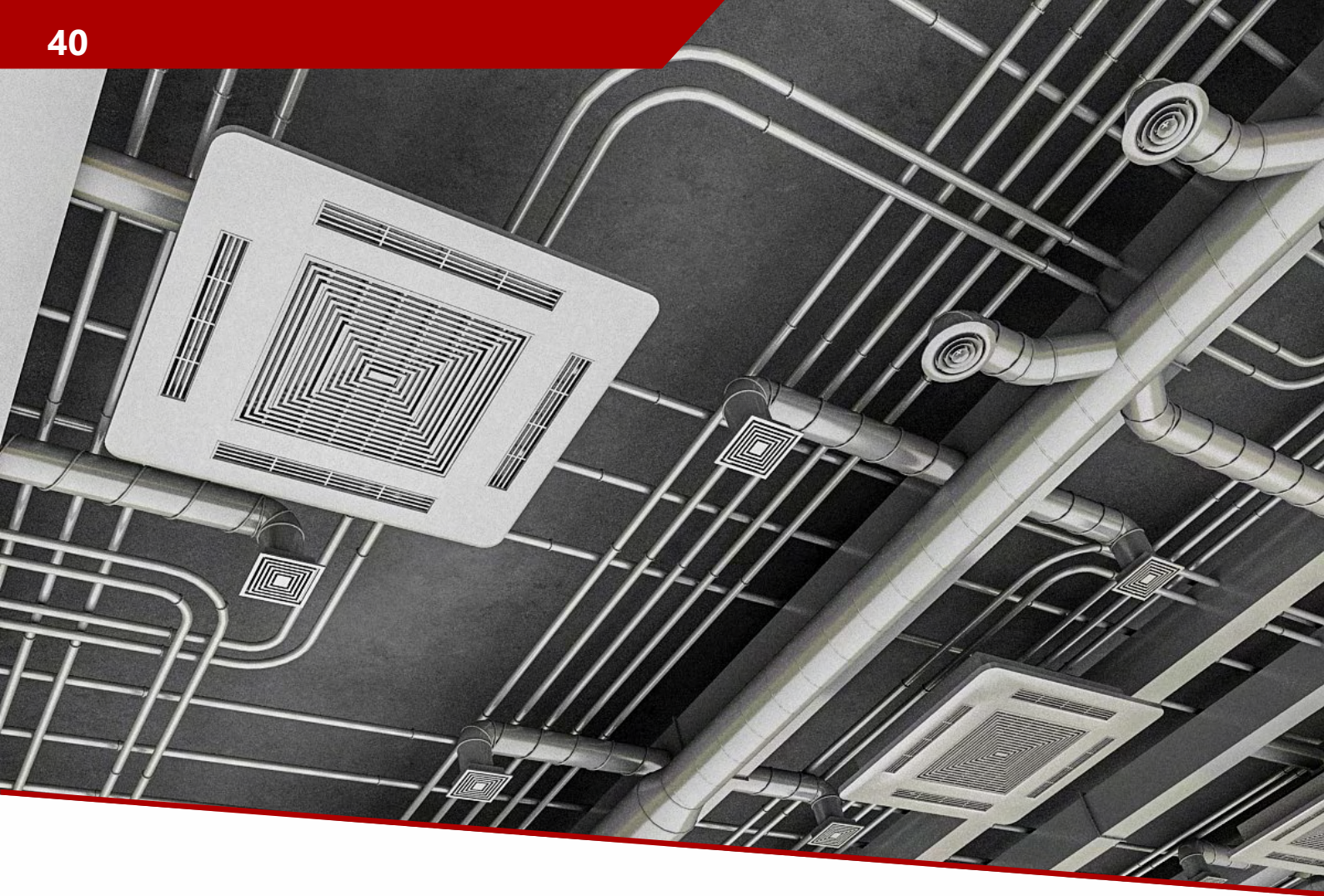




BMM

Regardless of the size and scale of the work to be done, Khan Construction LLC can transform your building, organization, etc. into a comfortable space through fully functional mechanical systems. As a full-service local company, we guarantee prompt and secure delivery.

One-stop control of all electronic devices installed within an enterprise provides a computing management system to ensure increased efficiency, simplified procedures and fast decision-making for the enterprise



VENTILATION

Ventilation systems are designed to eliminate discomfort in the facility, as well as to provide quality air. In addition, ventilation systems provide cleaning and heating of incoming air. Unlike air conditioners, which people consider more necessary, ventilation systems can be installed in residential buildings and offices of any design.

Based on its experience in the design and installation of ventilation systems, Flame Technologies offers a comprehensive solution for ventilation of any projected buildings with equipment that meets high quality modern safety standards. Upon implementing the project, we provide our customers with the opportunity to choose from a variety of valuable brands.

Ventilation systems are classified according to the following criteria:

- According to the method of air movement: Natural and mechanical
- Due to the purpose: Beat and suction
- Due to providing climate change: General ventilation, safety, smoke extraction
- Due to design and structure: Duct and Ductless



VENTILATION SYSTEMS

Ventilation systems are one of the most important elements installed in all administrative and residential buildings. Technical characteristics of ventilation systems must meet the standards of international standards.

The importance of ventilation systems is explained by the fact that in the absence of these systems, an increase in carbon dioxide and other harmful gases is observed indoors. And this causes people to feel unwell, headaches, fatigue, reduced productivity and other negative conditions. In order to prevent these cases, it is necessary to apply ventilation systems.

COOLING SYSTEMS



Flame Technologies LLC carries out the design, supply, sale and installation of the following cooling systems, depending on the choice of customers, as well as the purpose of the building in which the cooling system will be installed:

- VRF systems
- Multi split conditioning systems
- Chiller and fancoil cooling systems
- Sensitive type cooling systems of server rooms



HEATING SYSTEMS

Heating systems are systems that operate on the principle of compensating for heat loss from the indoor to the outdoor environment (environment) to keep the use space at the desired temperature.

- Boiler system
- Radiator system
- Underfloor heating system
- Heat pump

SERVICE



"Service" in administrative and office buildings for boilers, chillers, ventilation systems, etc. carries out maintenance of equipment.

Services are as follows:

- Installation, cleaning (washing) of air conditioners, -Freon filling, replacement of old with new, repair.
- Maintenance and repair of Chiller-Fancoil Systems
- Maintenance and repair of VRF systems
- Disassembly (i.e., disassembly of an air conditioner from one place and installation in another)
- Capacitor replacement
- Replacement of four lanes
- Compressor replacement
- Board Repair
- Combi materials, installation and repair, etc.

We are with you, dear customers, in solving problems regardless of time.



ELEVATOR SYSTEM

Lift control systems, designed to prevent outsiders from entering elevators, allow people to climb only to the floors where they live and work with a card or fingerprint given to them. These cards just take each resident to their own floor and do not allow residents or outsiders to use any of the other floors.



ELECTRICAL SYSTEMS

Electric lighting is now preferred in many places, from private homes to industrial environments. However, customers often outsource such work to seemingly cost-effective but unproven and inexperienced teams. That is why our engineering team takes great responsibility in its work. After deciding to work with us, our engineers will first get acquainted with the work environment and identify the factors that affect the progress of the work. The geometric structure and size of the object, the number and parameters of windows, the location are some of these factors. Depending on these and other factors, the following types of lighting are available:

- Local lighting
- Flood lighting
- Indoor lighting
- Large-scale lighting: Facades, areas around the object, etc.

LOCAL LIGHTING



FLOOD LIGHTING



INDOOR LIGHTING



LARGE-SCALE LIGHTING





MECHANICAL SYSTEMS

Flame Technologies is the author of many projects in the field of public and private construction in Azerbaijan and Turkey.

Our scope is as:

- design and construction of residential buildings;
- design and construction of office buildings;
- design and construction of commercial facilities;
- construction of industrial enterprises;
- supply of raw materials for the production of construction materials;
- design and construction of agricultural facilities;
- design and engineering works and turnkey construction of buildings and apartments

MECHANICAL INDUSTRY

Compressed Air Systems, Pressurized Oil Systems, Steam Systems, Hot Oil Systems, Hot Water Systems, Hot Steam Systems, Humidification and Humidification Systems, Air Duct Humidification and Humidification Systems, Water Spray Humidification Systems, Steam Spray Systems, Portable Drying Systems.

MECHANICAL NATURAL GAS

Indoor Installation, Column Installation, Gas Stone Installation, High Capacity Industrial Installations



MECHANICAL FILTERING

Water Filtration System, Water Softening System, Ultraviolet Sterilization System, Sea Water Filtering System, Dosage System, Other Industrial Systems

MECHANICAL HEATING SYSTEM

Apparatus heating devices, Steam heaters, Fan duct heating systems, Air duct heating devices, Hot water systems, Convector heating devices, Radiator heating devices, Radiant heating devices, Hot water systems, Split air conditioning heating devices, VRV / VRF , Underfloor heating



LİSENZIYAYA DAXİL OLAN İŞLƏR:

1. Xüsusi torpaq işləri
 - 1.1. Ankerlərin torpağa bərkidilməsi və binaların "torpaqda divar" üsulu ilə tikilməsi
 - 1.2. Enmə quyularının və kessonların qurulması
2. Beton və dəmir-beton konstruksiyaların quraşdırılması
3. Metal konstruksiyaların quraşdırılması
4. Ağac konstruksiyaların quraşdırılması
5. Fasad işləri
6. Mühəndis-kommunikasiya və şəbəkələrinin işləri
7. Hidrotexniki işlər:
 - 7.1. Sualtı-texniki işlər
 - 7.2. Dambaların (torpaq bəndlərin) tikintisi
 - 7.3. Limanların tikintisi
 - 7.4. Pirsələrin tikintisi
 - 7.5. Sahilbərkitmə işləri
 - 7.6. Su anbarları
8. Yol tikintisi
 - 8.1. Avtomobil yolları
 - 8.2. Aerodromları uçuş-enmə zolaqları
 - 8.3. Elektrik sərnişin nəqliyyatı (tramvay, trolleybus və kanat xətləri) yolları
 - 8.4. Nəqliyyat tunelləri və metropolitenlər
 - 8.5. Dəmiryol xətləri
9. Körpülərin, estakadaların və yol ötürücülərinin tikintisi
10. Xüsusi qurğuların tikintisi və quraşdırılması:
 - 10.1. Rezervuarlar və qazholderlər (qaz anbarları)
 - 10.2. Elektrik ötürücü xətləri
11. Sənaye və mülki obyektlərin tikintisi
 - 11.1. Aşırımı 24 metrədək
 - 11.2. Aşırımı 24 metr və daha çox
 - 11.3. Hündürlüyü 65 metrədək
 - 11.4. Hündürlüyü 65 metr və daha çox
 - 11.5. Tutumu 5 min nəfərədək
 - 11.6. Tutumu 5 min nəfər və daha çox



LİSENZİYAYA DAXİL OLAN İŞLƏR:

1. Yanğından mühafizə sistemlərinin və vasitələrinin quraşdırılması.
2. Yanğından mühafizə sistemlərinin və vasitələrinin texniki xidməti.
3. Yanğından mühafizə sistemlərinin və vasitələrinin təmiri.
4. Yanğından mühafizə sistemlərinin və vasitələrinin istehsalı.



01, January, 2021

FLAME Technologies
56 A.Rajabli str,
N.Narimanov 1/3
Baku, Azerbaijan

Ülvi Süleymanov, CEO NT Group
Office: (+99412) 436 90 93
Mobile: (+99450) 550 3033
E-mail: s.ulvi@technologies.az
Website: www.technologies.az

To Whom It May Concern:

APOLLO Security / ADME Inc. located at 3610 Birch Street, Newport Beach, CA 92660, U.S.A. is a United States manufacturer of electronic access control and alarm products and provides software for control and integration of access control, alarms, video, visitor management, time and attendance, logical security and interfaces with ERP software.

APOLLO Security / ADME Inc. certifies that **FLAME Technologies** located at 56 A.Rajabli str, N.Narimanov, Baku, Azerbaijan is an authorized dealer of **APOLLO Security / ADME Inc.** in the territory of the Republic of Azerbaijan.

FLAME Technologies has been authorized to sell, install, provide technical support, warranty service and maintain **APOLLO Security / ADME, Inc.** products since 01, January, 2021.

FLAME Technologies has the support of the **APOLLO Security / ADME Inc.** factory and its technical staff to ensure the successful deployment of **APOLLO Security / ADME Inc.** Access Control in the territory of the Republic of Azerbaijan.

Respectfully,

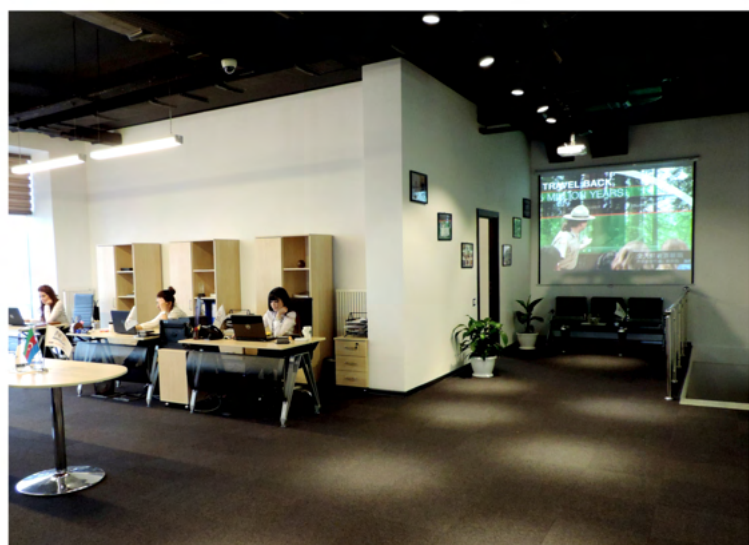
William Lorber
Vice President of Sales and Marketing
APOLLO Security / ADME, Inc.

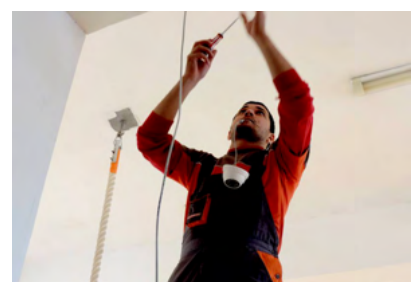
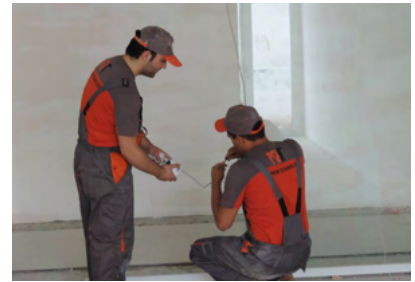
3610 Birch Street
Newport Beach, CA 92660-2619 USA

Tel: +1-949-852-8178
Fax: +1-949-852-8172

E-mail: Apollo@Apollo-Security.com
Web: www.Apollo-Security.com





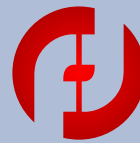






www.xanconstruction.az

info@xanconstruction.az



FLAME
TECHNOLOGIES

953

www.technologies.az

info@technologies.az

AZERBAIJAN

56, Ahmad Rajabli street,
Baku / Azerbaijan
Tel: +994 12 953
Fax: +994 12 436 90 93
Mob: +994 50 550 90 93

NEW YORK

122 East 42nd Street, Suite 2100
New York, NY 10168
Tel: 212 661 2315
Fax: 212 983 5276
Cell: 917 653 0961

DUBAI

Palladium Tower, 106, Cluster C,
Jumeirah Lake Tower, Dubai,
UAE 12345, United Arab Emirates
Office: +971(4) 5588061
Tel: +971(5) 56555998
Mob: +971(5) 43034471