

ZK55 Series POS Terminal

ZK55 Series is 15" all-in-one POS terminal. It was designed by solid & robust aluminum housing, which makes the machine have thermal dissipation function, so that element loss could be reduced effectively.

The Solution was designed for Smart Retail industry and Hospitality industry. ZKTeco provide the special and better customization service on modules based on the various requirements from different industries.



Composition



Compatible to multiple systems

Fingerprint

Able to be equipped with functional module

Support appearance customization

Support configuration customization

Support interface customization

MAKE YOUR LIFE SPARKLE WITH BIOMETRIC INNOVATIONS



The optical fingerprint scanner connected with the POS Cash Register has the following advantages:

The Merchants could manage their club members through POS terminals, including fingerprint collection, fingerprint registration, fingerprint matching, fingerprint retrieval and Anti-spoof/fake detection capability.

Features

- 15" ultra-slim design and stylish bezel-free touch display;
- Power efficient Intel® Celeron J1900 2.0GHz Quad-Core processor;
- Solid & robust aluminum housing design;
- Slim stand design with small foot print;
- IP64 water and dust proof front panel protection;
- Optional 1D/2D barcode scanner, MSR, RFID, iButton;
- Optional attached VFD & 8"/10.4" customer display;
- Easy-access 2.5" HDD tray for installation and maintenance.

Details

15" Bezel-Free Touch Display

Front panel protection
IP64 Dust & Spill Resistant for Front Bezel to Extend Product Life

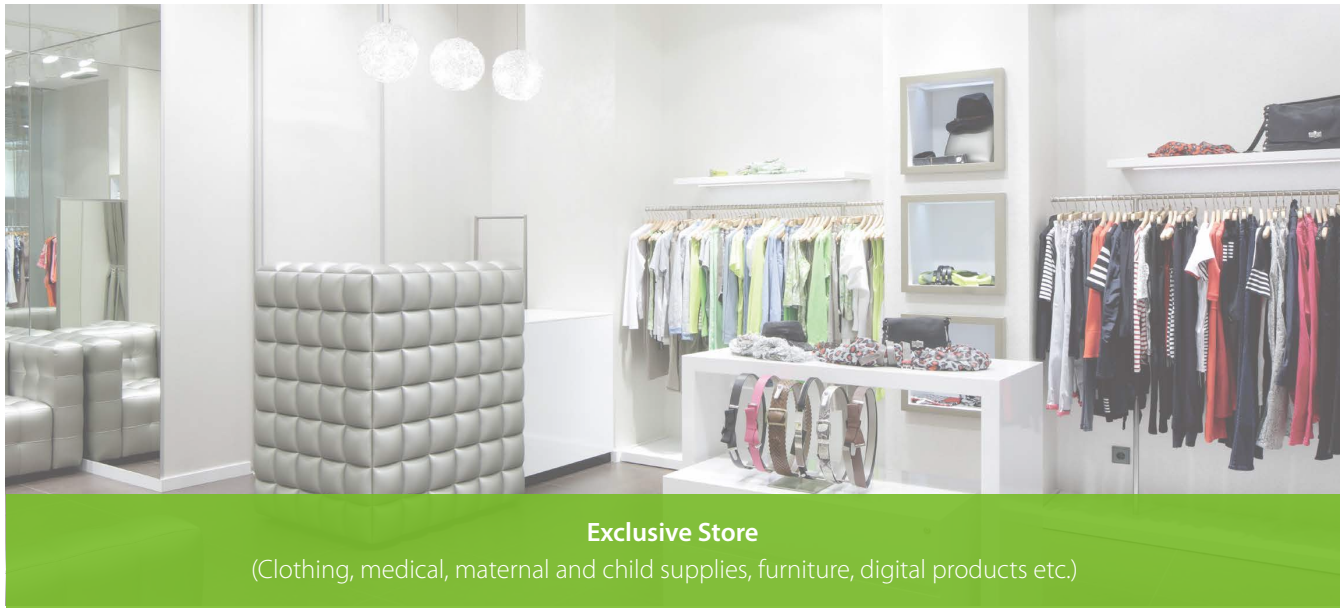
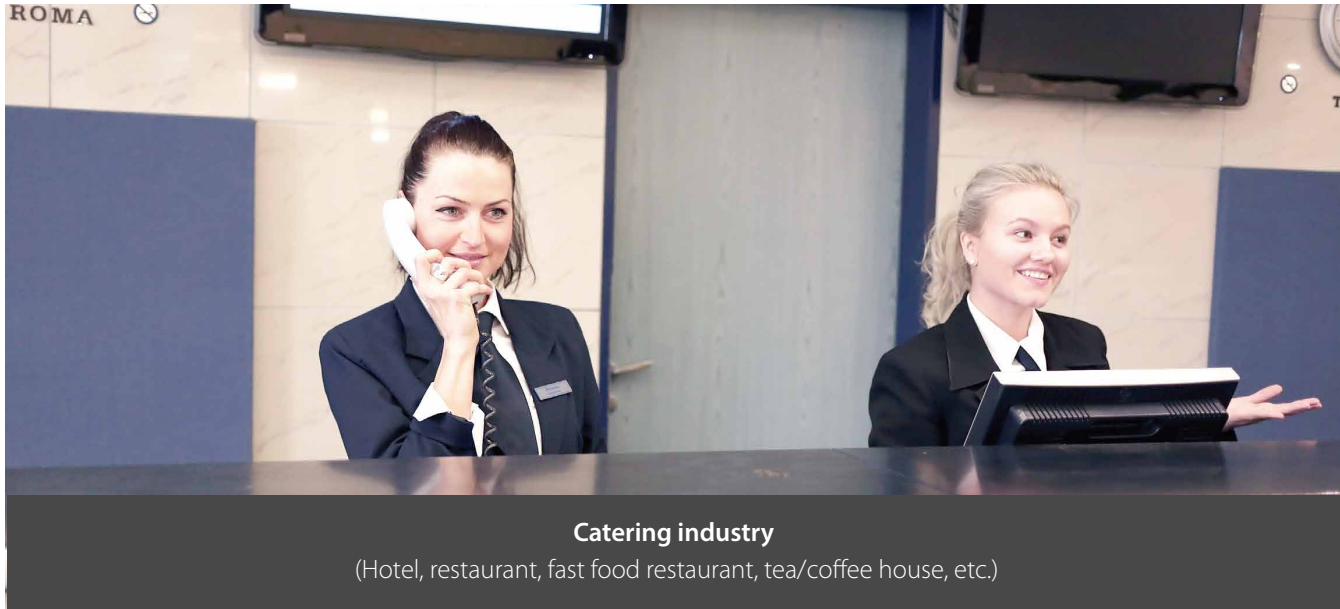
An easy access 2.5" HDD
Simplifies Maintenance & Installation

Optional VFD & 8"/10"/15" attached customer display

Various Footprint Selections
Full / B Stand / C Stand / D Stand

Stylish and Concise Design
A neat and sleek enclosure design with small footprint

Application Scenarios



Parameter Indexes and I/O Interface

Environment Operation Temp.: 32° ~ 104°F (0°~ 40°C) Storage Temp.: -4°~ 140°F (-20°~ 60°C) Relative Humidity: 20% ~ 80% non-condensing Power Supply :60 W 19V power adapter	Intel Celeron J1900	 POWER SW DC COM1 COM2 LAN C/D LINE OUT USB2.0*3 USB3.0*1
--	---------------------------	---

Specifications

Model	ZK5510
System	POS Ready Win7 / Win 8.1 Industry / Win 10 IoT Enterprise
Processor	Intel® Celeron J1900 QC 2.0GHz
Memory	One SO-DIMM socket supports DDR3L 1600 up to 8GB
Storage	2.5" SATAIII HDD × 1
Network	LAN × 1 (RJ45 10/100/1000 Base-T)
Protection	IP64 on front bezel
Dimension	371(W)×351(H)×207(D)mm

Specifications of Display/Touch Screen

Model	ZK5510
LCD Display Size	15" TFT LCD
Max. Resolution	1024×768
Brightness	250cd/㎡
Support Color	16.2M/ 262K colors
Backlight	LED
Touch Panel Type	Five-Wire Analog Resistive or Projected Capacitive

I/O Port

USB	×4(USB2.0×3,USB3.0×1)
Powered COM	× 2 (D-type 9 pins powered COM with DC 5V/ 12V selection)
Cash Drawer Port	× 1 (12V/24V RJ11 cash drawer port)
Audio Port	Line-out × 1

Optional

- Magnetic Stripe Card Reader
- VFD Customer Display
- 2nd LCD Display Screen
- Barcode Scanner (Barcode Gun)
- RFID
- Cash Drawer
- i-Button
- More

