

PRODUCT CATALOGUE



Access Control







OVERVIEW

ZKTeco is a multinational enterprise, that specializes in the manufacture and development of time and attendance and access control technology. With over 25 years presence in the global market, it benefits from a highly qualified team of over 1500 employees worldwide with its own manufacturing plants that, together with its R&D and engineering departments, ensures complete inhouse production of all aspects of its hardware, firmware and software.

One of the pioneers in multibiometric and RFID technology, ZKTeco's products are present in over 200 countries, with over 180 million users worldwide, and we continue to grow...

At the start of the 2010, ZKTeco Europe, the European Headquarters of ZKTeco was opened in Madrid and totally renewed in 2018, in order to provide European partners and dealers with the best possible services and solutions close at hand. ZKTeco Ireland Ltd and ZKTeco Deutschland GMBH were officially established in 2016 and 2018.

With its own, R&D, technical, financial, sales and warehousing facilities, ZKTeco Europe offers its clients complete support throughout the continent, to broaden horizons, open new markets, and manifest ZKTeco as a leading brand of T&A and Access Control technology in Europe.





Access Control

ZKTeco's Access Control Product line is comprised of IP based standalone access control device, networked access control panel, readers and guard patrol and accessories with network based one-stop access control and T&A software. Thus, ZKTeco provides one-stop R&D and manufacturing services for business partners.

➤ Fingerprint Identification Terminals

»» F22

NEW!

Ultrathin Fingerprint Access Control & Time Attendance terminal

- Wi-Fi Communication
- Reduced size
- BioID Sensor

Display: 2.8-inch TFT color Display

Fingerprint Capacity: 3,000 (1:N)

ID Card Capacity: 5,000 (Optional)

Sensor: BioID Sensor / Silk ID Sensor

Communication: RS485, TCP/IP, USB-host, Wi-Fi

Dimensions: 159,8 x 80,7 x 19,4



F22 is one of the smallest Access Control terminals on the market. With 16 cm high by 8 wide, the F22 is the perfect solution for installations of maximum exigency in confined spaces.

With a minimalist design in white or black colors, the F22 incorporates the new BioID algorithm that offers superior performance in fingerprint identification. It has Wi-Fi wireless communication as well as access control interfaces for connecting external readers, offering full connectivity in any environment. F22 arrives where no one arrives.



»» F21

Fingerprint Time Attendance and Access Control terminal

Fingerprint Capacity	3,000 (1:N)
Card Capacity (Optional)	5,000
Communication	RS485, TCP/IP, USB -Host, RS232
Standard Functions	Access control interface for electric lock, door sensor, exit button, alarm, doorbell.
Wiegand Signal	Input and Output, SRB Support
Dimension	205mmx86mmx45mm

»» SF420

IP Based Fingerprint Access Control & Time Attendance

SF420 is an IP based fingerprint terminals with 1,500 fingerprint capacity, which operate in both network mode and standalone mode. It can connect with ZKAccess3.5 software for access control and time attendance management.



Fingerprint Capacity	1,500 (1:N)
Card Capacity(Optional)	5,000
RF Card	EM/Mifare
Record Capacity	80,000
Display	2.8 inch resistive touch screen
Communication	TCP/IP, RS485, USB Host
Standard Functions	Access control interface for electric lock, door sensor, exit button, alarm, doorbell.
Wiegand Signal	Input and Output
Dimension	105 × 105 × 32mm

»» X8s

Simple Fingerprint&RFID Card Access Control Terminal

Simple access control terminal with fingerprint and RFID card, touch keypad.

Fingerprint Capacity	500 (1:N)
Card Capacity	500 Cards
RF Card	EM(standard)/Mifare(optional)
Communication	None
Standard Functions	Access control interface for electric lock, door sensor, exit button, alarm, doorbell.
Dimension	90 × 90 × 32 mm



Outdoor Fingerprint Identification Terminals

In a continuously expanding security environment, ZKTeco offers state of the art waterproof, antivandalic access control terminals.

The range features infrared fingerprint sensors, proximity and PIN ID, external door relays, voice prompt etc...ZKTeco's outdoor terminals allow complete integration in a buildings access control network.



TF1600

IP65 Waterproof	Casing	IP65 Waterproof
Pull SDK	Communication Protocol	Standalone SDK
3.000	Fingerprint Capacity	3.000
30.000	Card Capacity	10.000
10.000	Log Capacity	50.000
TCP/IP, RS485	Communication	TCP/IP, RS485, USB-host
Input and Output	Wiegand	Input and Output
Electric Lock, Door Sensor, Exit Button, Alarm	Access Control Interface	Electric Lock, Door Sensor, Exit Button, Alarm, Door Bell
Low temperature sensor	Special features	Optional 8000 FP (Pull SDK)



TF1700



MA500

IP65 Waterproof Metal	Casing	IP65 Waterproof Metal
Pull SDK	Communication Protocol	Standalone SDK
3.000	Fingerprint Capacity	1.500
30.000	Card Capacity	10.000
100.000	Log Capacity	100.000
TCP/IP, RS485	Communication	TCP/IP, RS485, USB-host
Output	Wiegand	Input and Output
Electric Lock, Door Sensor, Exit Button, Alarm	Access Control Interface	Electric Lock, Door Sensor, Exit Button, Alarm

MA300



RFID Identification Terminals

SC700

TFT RFID Access Control terminal

Display	3" TFT Touch Screen
Card Capacity	30,000
Communication	TCP/IP, USB-Host
Standard Functions	Access control interface for electric lock, door sensor, exit button, alarm.
Wiegand Signal	Input and Output



SCR100

RFID Access Control terminal

Card Capacity	30.000 Cards
RF Card	EM(standard)/Mifare(optional)
Communication	TCP/IP, RS485/232, USB-host
Wiegand	Input and Output
Standard Functions	Access control interface for electric lock, door sensor, exit button, alarm

DF Series

RFID Access Control keypads

Case	Metal Casing with IP65
Card Capacity	1.000 Cards
RF Card	EM(standard)/Mifare(optional)
Password Capacity	1.000
Standard Functions	Access control interface for electric lock, door sensor, exit button, alarm, doorbell.



ZKBioBT

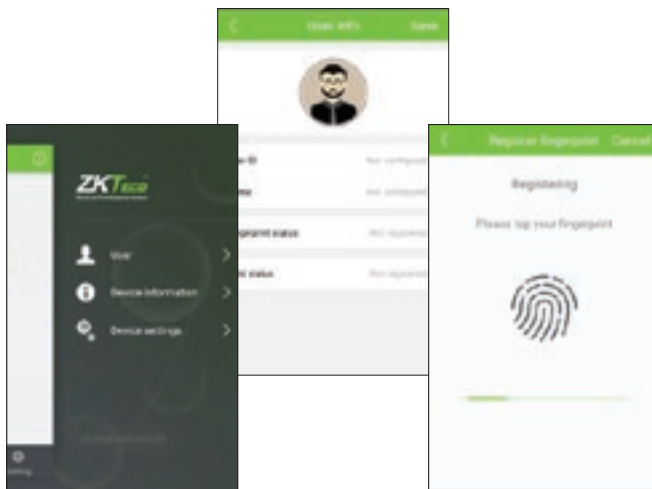
Newest Bluetooth Access Control APPS

Mobile Apps for you to wirelessly manage your doors



Mobile phone requirement for APP installation:

Android OS later than version 4.3, compliant with the Bluetooth protocol later than 4.0; iOS later than 7.1, devices later than iPhone 4S

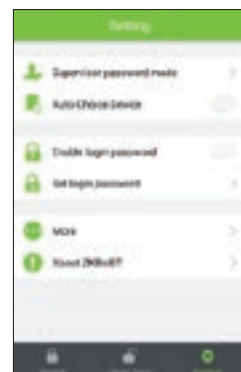


Remote User Registration

Easy User Registration though Bluetooth Connection

Wireless Door Setting

Both Open Time and Door Sensor, can seamlessly control in your hands



View Device information

Easily check out all the devices' basic information, such as available storage and usage information.

MA300-BT

Newest Bluetooth Access Control Terminal

Waterproof, Metallic Casing & ZKBioBT Apps Ready



Fingerprint Capacity	1,500 templates
ID Card Capacity	10,000
Transaction Capacity	10,000
Communication	Rs485, TCP/IP, USB-host, bluetooth
Access Control Interfaces for	3rd part electric lock, door sensor, exit button, alarm
Wiegand Signal	Input & Output
Standard Access Control	RS485 Reader, TimeZone, Group
Function	Multi-identification Duress mode, Anti-passback
Optional Function	Mifare, external USB keypad
Protection Grade	IP65
Dimensions(W x H x D)	73 x 148 x 34.5mm



X8-BT

Newest Bluetooth Access Control Terminal

Compact Size, Economic, ZKBioBT Apps Ready



Fingerprint Capacity	500 templates
ID Card Capacity	500
Sensor	SilkID Sensor
Communication	Bluetooth
Access Control	3rd part electric lock, door sensor
interface	Exit Button, Alarm, Door Bell
Standard Function	Simple access control Function, ID card
Optional Function	Mifare Card
Software	ZKBioBT APP
Dimensions(W x H x D)	101.5 x 101.5 x 37mm



Multi-Biometric Identification Terminals

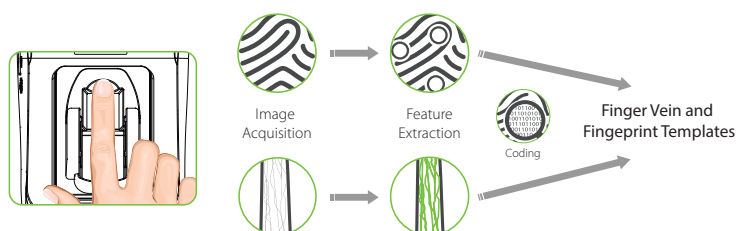
FV350

Multimodal Finger Vein and Fingerprint Technology for Higher Security

With our independent patent finger vein recognition technology, FV350 has fast and high-accuracy and comfortable operability. Multimodal Finger Vein and Fingerprint technology achieve higher security.



Press the finger on the sensor → Capture both fingerprint and finger vein images → Get the unique points and generate templates → Compare that templates with the data which in device's database → Show the result on the device screen.



Finger Vein Capacity	1,000 (1:N)
Fingerprint Capacity	1,000 (1:N)
Card Capacity(Optional)	2,000 (EM/Mifare)
Record Capacity	100,000
Display	2.8 inch capacitive screen
Communication	RS232/485, TCP/IP,USB -Host
Standard Functions	Access control interface for electric lock, door sensor, exit button, alarm, doorbell.
Wiegand Signal	Input and Output
Auxiliary Interface	1ea input for linkage function
Power Supply	DC12V 3A
Operating Temp.	-10 °C- 45 °C
Operating Humidity	20%-80%
Dimension	232mm×91mm×117mm
SDK	Pull SDK

Part Numbers

FV350-ID: with RFID card reader

FV350-M: with Mifare card reader

MultiBio 800

Multi-biometric Access Control and Time Attendance Terminal

MultiBio 800 with Face, Fingerprint recognition and optional with RFID mode is applicable to high level access control application.



	MultiBio 800	MultiBio 800-H
Face Capacity	400 (1:N)	1500 (1:N)/4000(1:1)
Fingerprint Capacity	1000 (1:N)	4000 (1:N)
Card Capacity (Optional)	1,000	10,000
Record Capacity	100,000	
Display	2.8 inch TFT screen	
Communication	RS485, TCP/IP, USB -Host	
Standard Functions	Access control interface for electric lock, door sensor, exit button, alarm, doorbell.	
Wiegand Signal	Input and Output	
Auxiliary terminal:	1ea input for linkage function	
Power Supply	DC12V 3A	
Operating Temp.	0 °C- 45 °C	
Operating Humidity	20%-80%	
Dimension	187.87mm×87.7mm×62.51mm	
SDK	Standalone SDK	

»» PA10

Palm and Fingerprint Access Control & Time Attendance terminal

- **Display:** 2.4-inch TFT LCD Color Screen
- **Palm Capacity:** 800
- **Fingerprint Capacity:** 3,000
- **Card Capacity (Optional):** 3,000 (ID/MF/HID Proximity card)
- **Logs Capacity:** 150,000
- **Sensor:** BioID Sensor
- **Optional Functions:** Printer, ADMS, PoE
- **Power Supply:** 12V 3A
- **Operating Environment:** -10 °C- 50 °C; 20%-80%
- **Dimensions:** 246.5 x93.0 x 51.1mm (L*W*T)
- **Communication:** RS485, TCP/IP, USB-host, Wi-fi (Optional)
- **Access Control Interface:** 3rd Party Electric Lock, Door Sensor, Exit Button, Alarm, Doorbell
- **Standard Functions:** DST, Automatic Status Switch, Anti-passback, Scheduled-Bell, External FP Reader






PA10 is a time attendance and access control terminal with Palm & Fingerprint Hybrid Biometrics. The Palm verification includes Palm Print & Palm Vein, so it not only is touchless, but also supports antispooof function.

The BioID sensor possesses outstandingly high identification rate towards dry, wet and rough fingers. TCP/IP, RS485, PoE (optional) and Wi-fi (optional) are also available which enable PA10 to be applied in different networks and various situations.

Access Control Panels

Centralized administration and web-based infrastructures reduce a company's IT costs and allows an easy management of all access points from one single location. For this purpose, ZKTeco offers a whole range of access control panels, that can manage from 1 to 4 doors using either or both proximity and fingerprint identification.

RFID Access Controllers

	C3-100	C3-200	C3-400
			
Card Capacity:	30.000	30.000	30.000
Event Capacity:	100.000	100.000	100.000
Communication:	TCP/IP, RS485	TCP/IP, RS485	TCP/IP, RS485
Wiegand Input:	2ea	4ea	4ea
Aux.output:	1ea	2ea	4ea
Aux.input:	none	2ea	4ea

RFID & Fingerprint Access Controllers

	inBIO160	inBIO260	inBIO460
			
Card Capacity:	30.000	30.000	30.000
Fingerprint Capacity:	3.000 (optional 20.000)	3.000 (optional 20.000)	3.000 (optional 20.000)
Event Capacity:	100.000	100.000	100.000
Communication:	TCP/IP, RS485	TCP/IP, RS485	TCP/IP, RS485
Wiegand Input:	2ea	4ea	4ea
Aux.output:	1ea	2ea	4ea
Aux.input:	1ea	2ea	4ea
Aux:	RS485 for Fingerprint Reader	RS485 for Fingerprint Reader	RS485 for Fingerprint Reader

NEW

InBio & C3 Wifi Bundle

Newest Wifi Biometric Access Control Panel

Perfect Choice for Old Building Renovation



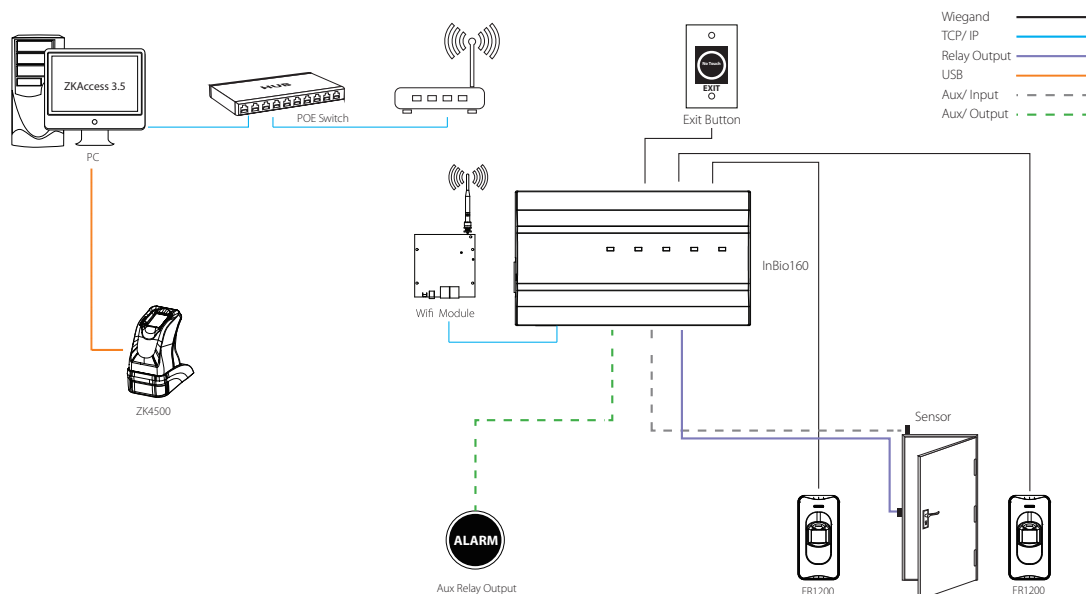
C3 Wifi Bundle Specification

	C3-100-WF	C3-200-WF	C3-400-WF
Number of Doors Controlled	1 Door	2 Door	4 Door
Number of Readers Supported	2	4	4
Wifi Module	Y	Y	Y
Types of Readers Supported	26-bit Wiegand, other upon request	26-bit Wiegand, other upon request	26-bit Wiegand, other upon request
Number of Inputs	2 (Exit Device and Door Status)	6 (2 Exit Device and 2 Door Status, 2 AUX)	12 (4 Exit Device and 4 Door Status, 4 AUX)
Number of Outputs	2 (1-Form C Relay for Lock and 1-Form C Relay for Aux Output)	4 (2-Form C Relay for Lock and 2-Form C Relay for Aux Output)	8 (4-Form C Relay for Lock and 4-Form C Relay for Aux Output)
Card Holders Capacity	30,000	30,000	30,000
Log Events Capacity	100,000	100,000	100,000
Communication	TCP/IP and RS-485	TCP/IP and RS-485	TCP/IP and RS-485



InBio Wifi Bundle Specification

	InBio-160-WF	InBio-260-WF	InBio-460-WF
Number of Doors Controlled	1 Door	2 Door	4 Door
Number of Readers Supported	4 (2 RS-485 Reader, 2 26-bit wiegand reader)	8 (4 RS-485 Reader, 4 26-bit wiegand reader)	12 (8 RS-485 Reader, 4 26-bit wiegand reader)
Wifi Module	Y	Y	Y
Types of Readers Supported	26-bit Wiegand and RS485 FR Series Reader	26-bit Wiegand and RS485 FR Series Reader	26-bit Wiegand and RS485 FR Series Reader
Number of Inputs	3 (Exit Device and Door Status, 1 AUX))	6 (2 Exit Device and 2 Door Status, 2 AUX))	12 (4 Exit Device and 4 Door Status, 4 AUX)
Number of Outputs	2 (1-From C Relay for Lock and 1-Form C Relay for Aux Output)	4 (2-From C Relay for Lock and 2-Form C Relay for Aux Output)	8 (4-From C Relay for Lock and 4-Form C Relay for Aux Output)
Card Holders Capacity	30,000	30,000	30,000
Fingerprint Capacity	3,000 (optional 20,000)	3,000 (optional 20,000)	3,000 (optional 20,000)
Log Events Capacity	100,000	100,000	100,000
Communication	TCP/IP and RS-485	TCP/IP and RS-485	TCP/IP and RS-485



NEW

InBio & C3 POE Bundle

Newest POE Biometric Access Control Panel
Effectively Cutting Cable Installation Cost

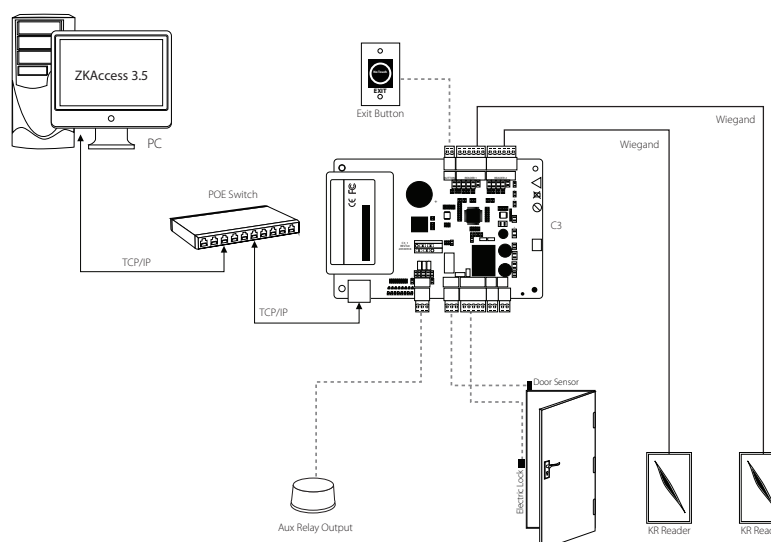

C3-100-POE Specification

Number of Doors Controlled	1 Door
Number of Readers Supported	2
Aux. Output	1
Types of Readers Supported	26-bit Wiegand, other upon request
Number of Inputs	2 (Exit Device and Door Status)
Number of Outputs	2 (1-Form C Relay for Lock and 1-Form C Relay for Aux Output)
Weight	3.35kg
Dimensions (Bundle Only)	305.2mm x 298.4mm x 89mm
Dimensions (Board Only)	160mm x 106mm
User	30,000
Event Buffer	100,000 transactions
Communication	RS485, Ethernet
Nominal Voltage of C3-100	12v
Standby Current of C3-100	40mA
Operating Temp	0 °C - 45 °C
Operating Humidity	20% - 80%


InBio-160-POE Specification

Number of Doors Controlled	1 Door
Number of Readers Supported	2
Aux. input	1
Aux. Output	1
Types of Readers Supported	26-bit Wiegand, other upon request
Number of Inputs	2 (Exit Device and Door Status)
Number of Outputs	2 (1-Form C Relay for Lock and 1-Form C Relay for Aux Output)
Weight	3.35kg
Dimensions (Bundle Only)	305.2mm x 298.4mm x 89mm
Dimensions (Board Only)	183mm x 106mm
User	30,000
Fingerprint	3,000
Event Buffer	100,000 transactions
Communication	RS485, Ethernet
Nominal Voltage of Inbio 160	12v
Standby Current of Inbio 160	50mA
Operating Temp	0 °C - 45 °C
Operating Humidity	20% - 80%

Wiegand ———
TCP/IP ———
Relay Output ———
Aux / Input - - - -
Aux /Output - - - -



External Readers

ZKTeco's wide range of external readers include waterproof IP65 rated fingerprint, proximity and password ID models, which allow you to connect indoor terminals and controllers with an outdoor access feature, connecting these directly by Wiegand or RS485.

Fingerprint Readers



FR1500

Embeddable Access Control reader

Case	Metal case. Waterproof Fingerprint cover (FR1500-WP)
Identification	Fingerprint
RF Card	125kHz Proximity card (Optional 13.56MHz Mifare)
Communication	RS485

FR1200

Waterproof Access Control reader

Case	IP65 Waterproof
Identification	Fingerprint
RF Card	125kHz Proximity card (Optional 13.56MHz Mifare)
Communication	RS485



RFID Readers

KR610 Series



	KR610				KR611				KR612			
	E	E-RS	D	D-RS	E	E-RS	D	D-RS	E	E-RS	D	D-RS
Proximity	125 KHz		Mifare 13.56 MHz		EM 125 KHz		Mifare 13.56 MHz		EM 125 KHz		Mifare 13.56 MHz	
Supported cards	EM		Classic, DESFire, Plus, Ultralight, NFC. (only UID)	DESFire (UID and Encrypted Application Data)	EM		Classic, DESFire, Plus, Ultralight, NFC. (only UID)	DESFire (UID and Encrypted Application Data)	EM		Classic, DESFire, Plus, Ultralight, NFC. (only UID)	DESFire (UID and Encrypted Application Data)
Read Range	Up to 10 cm		Up to 5 cm		Up to 10 cm		Up to 5 cm		Up to 8 cm		Up to 4.5 cm	
Reading Time	≤300ms											
Input Port	External LED Control / External Buzzer Control											
Material	ABS+PC with texture											
Output Format	26/34 bits	26 bits	34/66 bits	Up to 66 bits	26/34 bits	26 bits	34/66 bits	Up to 66 bits	26/34 bits	26 bits	34/66 bits	Up to 66 bits
Power/Current	DC 6-14V / Max.70mA											
LED	Red and Green LEDs											
Operating Temperature	-20°C to 65°C(-10° to +70°C)											
Operating Humidity	10% to 90% relative humidity non-condensing											
Beeper	Yes											
Index of Protection	IP65								IP64			
Dimensions	75x116x16 mm				86x86x16 mm				86x86x20 mm			
Cable length	Standard 35 cm (Optional 150 cm)											



» KR702E/M

- **Model:** KR702E/KR702M
- **Wiegand Signal:** Wiegand 26; Wiegand 34
- **Power Supply:** 12V DC, <90mA
- **Effective Distance:** 0~8cm (depending on working conditions and cards)
- **Read Time:** <80ms
- **Ingress Protection Rate:** IP65
- **Operating Frequency:** 125KHz/13.56MHz
- **Operating Temperature:** 0 °C- 70 °C
- **Operating Humidity:** 20%-80%
- **Dimension (LxWxH):** 113x75x16mm

UHF Long Distance



UHF Slave Readers

Ultra-long Reading distance reader

Model	UHF 1-5	UHF 2-5	UHF 1-10	UHF 2-10
Dimensions	260 X 260 X 65mm		445 x 445 x 70mm	
Reading distance	Up to 6 m (adjustable)		Up to 12 m (adjustable)	
Communication interface	Wiegand 26 (Default) / Wiegand 34, USB			
Frequency	902MHz-928MHz , 865MHz-868MHz			
Shell material	Die-casting aluminum shell, Antenna panel with engineering plastics			
Interface protocol	EPC global UHF Class 1Gen 2/ISO 18000-6c			
Multiple tags identification	>50			
Working mode	Always read (Default) / Trigger read			

U1000/U2000

Ultra-long Reading distance Standalone terminals



U1000



U2000

- **Card Capacity:** 5,000 cards
- **Transactions:** 30,000
- **Hardware Platform:** ZMM220
- **Working Frequency:** F Series: 902Mhz-928MHz;
E Series: 865MHz-868MHz
- **Reading Distance:** 0-6m (Stable is 0-5m)/
0-12m (Stable is 0-10m)
- **Communication:** TCP/IP (connect access software) ,
USB (connect demo)
- **Access Control Interface:** 3rd Party Electric Lock, Door
Sensor, Exit Button, Alarm, Wiegand In/Out

- **Access Control Functions:** Standard access functions,
anti-passback
- **Antenna Gain:** 8dBi/12dBi
- **Output Power:** 18dBm-26dBm
- **Support Software:** ZKAccess3.5, ZKBioSecurity3.0
- **Power Supply:** DC12V, 3A
- **Working Temperature:** -20°C-+60°C
- **Working Humidity:** <95% (25°C)
- **Dimension:** 250mm*250mm*70mm(±5)/
445mm*445mm*70mm (±5)

Accessories-Cards and Tags



»» ID Card(thin)

- 125kHz Proximity Card
- Read only



»» ID Card (long range)

- 125kHz Proximity Card
- Read only
- Suitable for KR1000 for 60cm reading range



»» ID Card(thick)

- 125kHz Proximity Card
- Read only



»» Mifare Card(S50)

- 13.56Mhz Mifare One Card
- Standard MF1 S50(1 Kbyte) EEPROM



»» Mifare Card(S70)

- 13.56Mhz Mifare One Card
- Standard MF1 S70(4 Kbyte) EEPROM



»» HID Card(thin)

- 125KHz HID proximity card



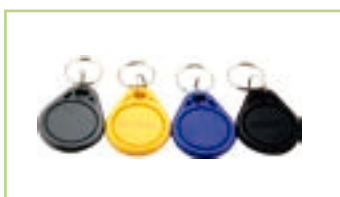
HID Card(thick)

- 125KHz HID proximity card



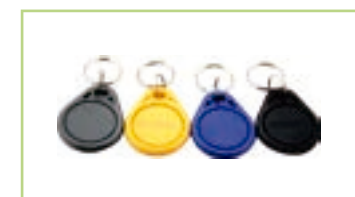
»» TAG-03(ID)(S50)

- 125KHz Proximity TAG



»» TAG-03(Mifare S50)

- 13.56MHz Proximity TAG



TAG-03(Mifare S70)

- 13.56MHz Proximity TAG

Accessories-Exit Buttons



» K2

- Non-touch Exit Sensor with Remote Key(Diffused Detection)
- NO NC COM relay output
- Size: 115Lx70W(mm)



» K2S

- Non-touch Exit Sensor with Remote Key(Diffused Detection)
- NO NC COM relay output
- Size: 86Lx86W(mm)



» K1-1D

- Non-touch/Touch free Exit Sensor (Diffused Detection)
- NO NC COM relay output
- Size: 86Lx86W(mm)



» Remote Key

- Remote control for K2/K2S



» EX-800A

- Size: 800A: 86Lx50Wx20T(mm)



» EX-800B

- Size: 800A: 86Lx86Wx20T(mm)



» K1-1

- Non-touch/Touch free Exit Sensor (Diffused Detection)
- NO NC COM relay output
- Size: 115Lx70W(mm)



» EX-802

- Size: 802: 86Lx86Wx20T(mm)



» EX-801A

- Size: 801A: 91Lx28Wx20T(mm)



» EX-801B

- Size: 800A: 86Lx86Wx20T(mm)

Accessories-Box and Cover



Metal Box

- Metal Box for C3 Series control panel, including key, cables, iron plate etc



Metal Box

- Metal Box for inBIO Series control panel, including LED indicator, key, cables, iron plate etc.



WP01

- Protective Cover for TF1700/TF1600

Accessories-Power Supply



PS901

- Power Supply without Battery Leads
- Input: 220V AC, 50Hz (110V optional)
- Output: 12V DC, 3A



PS901B

- Power Supply with Battery Leads
- Input: 220V AC, 50Hz (110V optional)
- Output: 12V DC, 3A
- 12V 7Ah battery not included



PS902

- Power Supply with Battery Leads
- Input: 220V AC, 50Hz (110V optional)
- Output: 12V DC, 3A



PS902B

- Power Supply with Battery Leads
- Input: 220V AC, 50Hz (110V optional)
- Output: 12V DC, 3A
- 12V 7Ah battery not included



Power Supply

- Plug to device: 90°, $\phi 2.1$ mm
- Cable Length: 1.8m
- Output: 12V DC, 3A



TPM005B

- Power Supply with Battery Leads
- Input: 220V AC, 50Hz (110V optional)
- Output: 12V DC, 3A



TPM003B

- Spare parts for inBIO160 Package B
- Power supply for Controller with uninterrupted battery function
- Input: 110-240V AC, 50/60z
- Output: 13.8V/3A+1A



ZKPSM030B

- Spare parts for C3-100/200/400 Package B
- Power supply for Controller with uninterrupted battery function
- Input: 110-240V AC, 50/60z
- Output: 13.7V/3.5A+1A

Software Management

New ZKAccess3.5 Software

Our ZKAccess 3.5 is an Access Control software application that offers complete flexibility in programming to achieve any access control performance your solution may require.

The ZKAccess system goes a step beyond conventional access control systems, by combining unique RFID and biometric identification. With its intuitive easy-to-use GUI and wizard type settings, ZKAccess provides comprehensive access control security for small-to-medium sized businesses and enterprise-level systems.



ZKAccess includes a time and attendance feature to allow administrator to define timetables, shifts, schedules, and holiday settings. It provides compact and easy-to-use report and In/Out board features.



The system controls up to 400 doors and allows integration with various database systems, event monitoring, interlock, linkage, passage mode, first-card opening, multi-card opening, visual map, T&A management and reporting features.

Third Party software integration

ZKTeco can provide a free SDK with open libraries to be used with third party access control systems. In this way, the needs for software developers to merge different Access Control solutions in one complete and integrated solution are solved.

Features and Applications



Embedded Internal Biometric Identification:

The FR Series readers transmit fingerprint templates to inBIO via RS485 that matches fingerprints with templates stored in the database. Wiegand inputs are also provided for traditional RFID readers.



Complete Access Control:

Apart from standard access control features for controlling door locks, easily programmable auxiliary relays can be used for additional control and interface to lights, alarms, intrusion detection panels, or even extra locking devices or gate controllers.



Communication:

The access controllers can be easily integrated into your network and support both TCP/IP and RS-485 communication. The auto-discovery tool can manage the setting and modification of network parameters in a fast and efficient manner.



Options:

Three different sizes of controllers can suit various project needs and reduce the cost of required floorspace. 1-way and 2-way models can be mixed and matched in optimized system architecture.



Capacity:

The system supports up to 3000 fingerprint templates, 30,000 badge users and stores up to 100,000 events and transactions. Data is preserved if there is power outage. Controller can continue operating if network connection is interrupted.



Built-in Advanced

Access Control Functions:

Anti-passback, First-Card opening, Multi-Card opening, Duress Password Entry, and Auxiliary input/output linkages are built into controller firmware.



Cost Efficient Management:

New controller features allows you to remotely upgrade firmware of systems out in the field, ensuring that you can manage and expand your investment value without any complex third party tools.



For Software Developers:

Free SDK is available for integrators and OEMs (optional Push SDK for Real-Time environments) to integrate the controller with their own or existing security or personnel management applications. Upon demand, ZKTeco can customize firmware to meet any customer requirements.

Applications



Building Entrance



Time & Attendance



Visitor Management



Sports and leisure facilities



Arena Entrance Events



Vehicle Access

The ZKTeco logo is centered within a solid green square. The logo itself consists of the letters 'ZKT' in a bold, dark blue, sans-serif font, followed by 'eco' in a smaller, white, italicized sans-serif font.

ZKT_{eco}

ZKTeco Europe

Carretera de Fuencarral 44, Edificio 1. Planta 2.
28108 Alcobendas. Madrid. SPAIN
Tel: +34 916 532 891 E-mail: sales@zkteco.eu
www.zkteco.eu

© Copyright 2018. ZKTeco Inc. ZKTeco Logo is a registered trademark of ZKTeco or a related company. All other product and company names mentioned are used for identification purposes only and may be the trademarks of their respective owners. All specifications are subject to change without notice. All rights reserved.